

EF-1 Alpha1/2 (Acetyl Lys41) Polyclonal Antibody

Description

Product type	Primary Antibody
Code	BT-AP02843
Host	Rabbit
Isotype	IgG
Size	20ul, 50ul, 100ul
Immunogen	The antiserum was produced against synthesized Acetyl-peptide derived from human EEF1A around the Acetylation site of Lys41. AA range:1-50
Mol wt	50141/50470/50185
Species reactivity	Human, Mouse, Rat
Clonality	Polyclonal
Recommended application	WB, ELISA
Concentration	1 mg/ml
Full name	EF-1 alpha1/2 (Acetyl Lys41) Antibody
Synonyms	EEF1A1; EEF1A; EF1A; LENG7; Elongation factor 1-alpha 1; EF-1-alpha-1; Elongation factor Tu; EF-Tu; Eukaryotic elongation factor 1 A-1; eEF1A-1; Leukocyte receptor cluster member 7; EEF1A2; EEF1AL; ST

This product is for research use only, not for use in human, therapeutic or diagnostic procedure.

Background

EEF1A1 encodes an isoform of the alpha subunit of the elongation factor-1 complex, which is responsible for the enzymatic delivery of aminoacyl tRNAs to the ribosome. This isoform (alpha 1) is expressed in brain, placenta, lung, liver, kidney, and pancreas, and the other isoform (alpha 2) is expressed in brain, heart and skeletal muscle. eukaryotic translation elongation factor 1 alpha 1 is identified as an autoantigen in 66% of patients with Felty syndrome. EEF1A1 has been found to have multiple copies on many chromosomes, some of which, if not all, represent different pseudogenes.

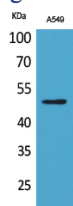
Recommended Dilution

WB: 1: 500 - 1: 2000

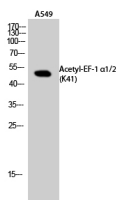
ELISA: 1: 20000

Not yet tested in other applications.

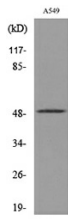
Images



Western Blot analysis of A549 cells using Acetyl-EF-1 α 1/2 (K41) Polyclonal Antibody. Secondary antibody was diluted at 1:20000



Western Blot analysis of A549 cells using Acetyl-EF-1 α 1/2 (K41) Polyclonal Antibody. Secondary antibody was diluted at 1:20000



Western blot analysis of lysate from A549 cells, using EEF1A-pan (Acetyl-Lys41) Antibody.

Storage

-20°C for one year

501 Changsheng S Rd, Nanhu Dist, Jiaxing, Zhejiang, China

Tel: 86 21 31007137 | E-mail: save@bt-laboratory.com | www.bt-laboratory.com