

## EF-1Beta Polyclonal Antibody

### Description

Product type	Primary Antibody
Code	BT-AP02848
Host	Rabbit
Isotype	IgG
Size	20ul, 50ul, 100ul
Immunogen	The antiserum was produced against synthesized peptide derived from human EF-1beta. AA range:83-132
Mol wt	24764
Species reactivity	Human, Mouse, Rat
Clonality	Polyclonal
Recommended application	WB, ELISA
Concentration	1 mg/ml
Full name	EF-1beta Antibody
Synonyms	EEF1B2; EEF1B; EF1B; Elongation factor 1-beta; EF-1-beta

This product is for research use only, not for use in human, therapeutic or diagnostic procedure.

### Background

EEF1B2 encodes a translation elongation factor. Elongation factor 1-beta is a guanine nucleotide exchange factor involved in the transfer of aminoacylated tRNAs to the ribosome. Alternative splicing results in three transcript variants which differ only in the 5' UTR.

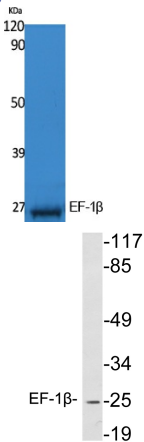
### Recommended Dilution

WB: 1: 500 - 1: 2000

ELISA: 1: 20000

Not yet tested in other applications.

### Images



Western Blot analysis of extracts from K562 cells, using EF-1 $\beta$  Polyclonal Antibody. Secondary antibody was diluted at 1:20000

Western blot analysis of lysates from K562 cells, using EF-1 $\beta$  antibody.

### Storage

-20°C for one year