

## eIF2B Gamma Polyclonal Antibody

### Description

<b>Product type</b>	Primary Antibody
<b>Code</b>	BT-AP02886
<b>Host</b>	Rabbit
<b>Isotype</b>	IgG
<b>Size</b>	20ul, 50ul, 100ul
<b>Immunogen</b>	Synthesized peptide derived from eIF2B $\gamma$ . at AA range: 240-320
<b>Mol wt</b>	50240
<b>Species reactivity</b>	Human, Mouse
<b>Clonality</b>	Polyclonal
<b>Recommended application</b>	WB, ELISA
<b>Concentration</b>	1 mg/ml
<b>Full name</b>	eIF2Bgamma Antibody
<b>Synonyms</b>	EIF2B3; Translation initiation factor eIF-2B subunit gamma; eIF-2B GDP-GTP exchange factor subunit gamma

This product is for research use only, not for use in human, therapeutic or diagnostic procedure.

### Background

Eukaryotic translation initiation factor 2B subunit gamma encoded by EIF2B3 is one of the subunits of initiation factor eIF2B, which catalyzes the exchange of eukaryotic initiation factor 2-bound GDP for GTP. It has also been found to function as a cofactor of hepatitis C virus internal ribosome entry site-mediated translation. Mutations in EIF2B3 have been associated with leukodystrophy with vanishing white matter. Alternatively spliced transcript variants encoding different isoforms have been found for EIF2B3.

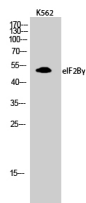
### Recommended Dilution

WB: 1: 500 - 1: 2000

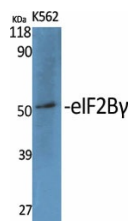
ELISA: 1: 5000

Not yet tested in other applications.

### Images



Western Blot analysis of K562 cells using eIF2B $\gamma$  Polyclonal Antibody diluted at 1:1000



Western Blot analysis of various cells using eIF2B $\gamma$  Polyclonal Antibody diluted at 1:1000

## Storage

-20°C for one year

501 Changsheng S Rd, Nanhu Dist, Jiaxing, Zhejiang, China

Tel: 86 21 31007137 | E-mail: [save@bt-laboratory.com](mailto:save@bt-laboratory.com) | [www.bt-laboratory.com](http://www.bt-laboratory.com)