

## eIF2B Delta Polyclonal Antibody

### Description

<b>Product type</b>	Primary Antibody
<b>Code</b>	BT-AP02887
<b>Host</b>	Rabbit
<b>Isotype</b>	IgG
<b>Size</b>	20ul, 50ul, 100ul
<b>Immunogen</b>	The antiserum was produced against synthesized peptide derived from human EIF2B4. AA range:226-275
<b>Mol wt</b>	57557
<b>Species reactivity</b>	Human, Mouse, Rat
<b>Clonality</b>	Polyclonal
<b>Recommended application</b>	WB, ELISA
<b>Concentration</b>	1 mg/ml
<b>Full name</b>	eIF2Bdelta Antibody
<b>Synonyms</b>	EIF2B4; EIF2BD; Translation initiation factor eIF-2B subunit delta; eIF-2B GDP-GTP exchange factor subunit delta

This product is for research use only, not for use in human, therapeutic or diagnostic procedure.

### Background

Eukaryotic initiation factor 2B (EIF2B), which is necessary for protein synthesis, is a GTP exchange factor composed of five different subunits. The protein encoded by EIF2B4 (eukaryotic translation initiation factor 2B subunit delta) is the fourth, or delta, subunit. Defects in EIF2B4 are a cause of leukoencephalopathy with vanishing white matter (VWM) and ovarioleukodystrophy. Multiple transcript variants encoding different isoforms have been found for EIF2B4.

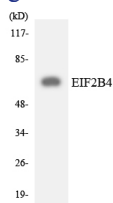
### Recommended Dilution

WB: 1: 500 - 1: 2000

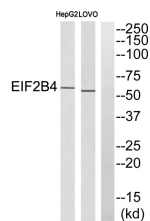
ELISA: 1: 5000

Not yet tested in other applications.

### Images



Western blot analysis of the lysates from HeLa cells using EIF2B4 antibody.



Western blot analysis of EIF2B4 Antibody. The lane on the right is blocked with the EIF2B4 peptide.

## Storage

-20°C for one year

501 Changsheng S Rd, Nanhu Dist, Jiaxing, Zhejiang, China

Tel: 86 21 31007137 | E-mail: [save@bt-laboratory.com](mailto:save@bt-laboratory.com) | [www.bt-laboratory.com](http://www.bt-laboratory.com)