

EKLF Polyclonal Antibody

Description

Product type	Primary Antibody
Code	BT-AP02904
Host	Rabbit
Isotype	IgG
Size	20ul, 50ul, 100ul
Immunogen	The antiserum was produced against synthesized peptide derived from human KLF1 around the non-acetylation site of Lys274. AA range:231-280
Mol wt	38221
Species reactivity	Human
Clonality	Polyclonal
Recommended application	WB, ELISA
Concentration	1 mg/ml
Full name	EKLF Antibody
Synonyms	KLF1; EKLF; Krueppel-like factor 1; Erythroid krueppel-like transcription factor; EKLF

This product is for research use only, not for use in human, therapeutic or diagnostic procedure.

Background

KLF1 encodes a hematopoietic-specific transcription factor that induces high-level expression of adult beta-globin and other erythroid genes. The zinc-finger protein binds to the DNA sequence CCACACCCT found in the beta hemoglobin promoter. Heterozygous loss-of-function mutations in this gene result in the dominant In(Lu) blood phenotype.

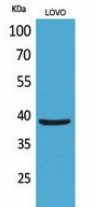
Recommended Dilution

WB: 1: 500 - 1: 2000

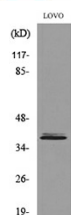
ELISA: 1: 20000

Not yet tested in other applications.

Images



Western Blot analysis of LOVO cells using EKLF Polyclonal Antibody. Secondary antibody was diluted at 1:20000 cells nucleus.



Western blot analysis of lysate from LOVO cells, using KLF1 Antibody.

Storage

-20°C for one year

501 Changsheng S Rd, Nanhu Dist, Jiaxing, Zhejiang, China

Tel: 86 21 31007137 | E-mail: save@bt-laboratory.com | www.bt-laboratory.com