

## Eps8L3 Polyclonal Antibody

### Description

Product type	Primary Antibody
Code	BT-AP03029
Host	Rabbit
Isotype	IgG
Size	20ul, 50ul, 100ul
Immunogen	The antiserum was produced against synthesized peptide derived from human EPS8L3. AA range:401-450
Mol wt	66861
Species reactivity	Human
Clonality	Polyclonal
Recommended application	IHC-p, IF, ELISA
Concentration	1 mg/ml
Full name	Eps8L3 Antibody
Synonyms	EPS8L3; EPS8R3; Epidermal growth factor receptor kinase substrate 8-like protein 3; EPS8-like protein 3; Epidermal growth factor receptor pathway substrate 8-related protein 3; EPS8-related protein 3

**This product is for research use only, not for use in human, therapeutic or diagnostic procedure.**

### Background

EPS8L3 (EPS8 like 3) encodes a protein that is related to epidermal growth factor receptor pathway substrate 8 (EPS8), a substrate for the epidermal growth factor receptor. The function of this protein is unknown. Alternatively spliced transcript variants encoding different isoforms exist.

### Recommended Dilution

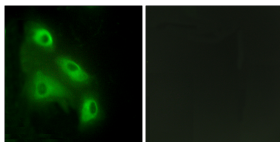
IHC: 1: 100 - 1: 300

IF: 1: 200 - 1: 1000

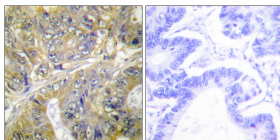
ELISA: 1: 10000

Not yet tested in other applications.

### Images



Immunofluorescence analysis of HeLa cells, using EPS8L3 Antibody. The picture on the right is blocked with the synthesized peptide.



Immunohistochemistry analysis of paraffin-embedded human colon carcinoma tissue, using EPS8L3 Antibody. The picture on the right is blocked with the synthesized peptide.

### Storage

-20°C for one year