

ERCC4 Polyclonal Antibody

Description

Product type	Primary Antibody
Code	BT-AP03047
Host	Rabbit
Isotype	IgG
Size	20ul, 50ul, 100ul
Immunogen	The antiserum was produced against synthesized peptide derived from human XPF. AA range:801-850
Mol wt	103289
Species reactivity	Human, Mouse
Clonality	Polyclonal
Recommended application	WB, ELISA
Concentration	1 mg/ml
Full name	ERCC4 Antibody
Synonyms	ERCC4; ERCC11; XPF; DNA repair endonuclease XPF; DNA excision repair protein ERCC-4; DNA repair protein complementing XP-F cells; Xeroderma pigmentosum group F-complementing protein

This product is for research use only, not for use in human, therapeutic or diagnostic procedure.

Background

ERCC excision repair 4, endonuclease catalytic subunit encoded by ERCC4 forms a complex with ERCC1 and is involved in the 5' incision made during nucleotide excision repair. This complex is a structure specific DNA repair endonuclease that interacts with EME1. Defects in this gene are a cause of xeroderma pigmentosum complementation group F (XP-F), or xeroderma pigmentosum VI (XP6).

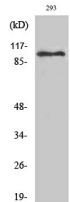
Recommended Dilution

WB: 1: 500 - 1: 2000

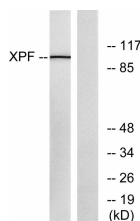
ELISA: 1: 10000

Not yet tested in other applications.

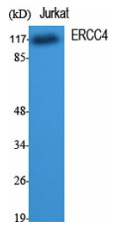
Images



Western Blot analysis of 293 cells using ERCC4 Polyclonal Antibody cells nucleus.



Western blot analysis of lysates from 293 cells, using XPF Antibody. The lane on the right is blocked with the synthesized peptide.



Western Blot analysis of various cells using ERCC4 Polyclonal Antibody cells nucleus.

Storage

-20°C for one year

501 Changsheng S Rd, Nanhu Dist, Jiaxing, Zhejiang, China

Tel: 86 21 31007137 | E-mail: save@bt-laboratory.com | www.bt-laboratory.com