

## Exo1 Polyclonal Antibody

### Description

<b>Product type</b>	Primary Antibody
<b>Code</b>	BT-AP03102
<b>Host</b>	Rabbit
<b>Isotype</b>	IgG
<b>Size</b>	20ul, 50ul, 100ul
<b>Immunogen</b>	The antiserum was produced against synthesized peptide derived from human EXO1. AA range:61-110
<b>Mol wt</b>	94103
<b>Species reactivity</b>	Human, Mouse
<b>Clonality</b>	Polyclonal
<b>Recommended application</b>	WB, IF, ELISA
<b>Concentration</b>	1 mg/ml
<b>Full name</b>	Exo1 Antibody
<b>Synonyms</b>	EXO1; EXO1; HEX1; Exonuclease 1; hExo1; Exonuclease I; hExoI

**This product is for research use only, not for use in human, therapeutic or diagnostic procedure.**

### Background

EXO1 encodes a protein with 5' to 3' exonuclease activity as well as an RNase H activity. It is similar to the *Saccharomyces cerevisiae* protein Exo1 which interacts with Msh2 and which is involved in mismatch repair and recombination. Alternative splicing of EXO1 results in three transcript variants encoding two different isoforms.

### Recommended Dilution

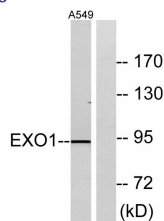
WB: 1: 500 - 1: 2000

IF: 1: 200 - 1: 1000

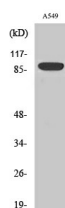
ELISA: 1: 10000

Not yet tested in other applications.

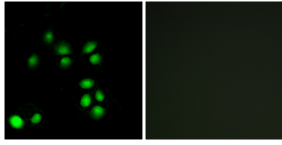
### Images



Western blot analysis of lysates from A549 cells, using EXO1 Antibody. The lane on the right is blocked with the synthesized peptide.



Western Blot analysis of various cells using Exo1 Polyclonal Antibody cells nucleus.



Immunofluorescence analysis of A549 cells, using EXO1 Antibody. The picture on the right is blocked with the synthesized peptide.

### Storage

-20°C for one year

501 Changsheng S Rd, Nanhu Dist, Jiaxing, Zhejiang, China

Tel: 86 21 31007137 | E-mail: [save@bt-laboratory.com](mailto:save@bt-laboratory.com) | [www.bt-laboratory.com](http://www.bt-laboratory.com)