

Ezrin Polyclonal Antibody

Description

Product type	Primary Antibody
Code	BT-AP03109
Host	Rabbit
Isotype	IgG
Size	20ul, 50ul, 100ul
Immunogen	The antiserum was produced against synthesized peptide derived from human Ezrin. AA range:446-495
Mol wt	69413
Species reactivity	Human, Mouse, Rat
Clonality	Polyclonal
Recommended application	WB, ELISA
Concentration	1 mg/ml
Full name	Ezrin Antibody
Synonyms	EZR; VIL2; Ezrin; Cytovillin; Villin-2; p81

This product is for research use only, not for use in human, therapeutic or diagnostic procedure.

Background

The cytoplasmic peripheral membrane protein encoded by EZR functions as a protein-tyrosine kinase substrate in microvilli. As a member of the ERM protein family, this protein serves as an intermediate between the plasma membrane and the actin cytoskeleton. This protein plays a key role in cell surface structure adhesion, migration and organization, and it has been implicated in various human cancers. A pseudogene located on chromosome 3 has been identified for EZR. Alternatively spliced variants have also been described for EZR.

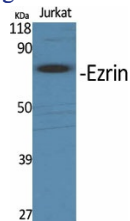
Recommended Dilution

WB: 1: 500 - 1: 2000

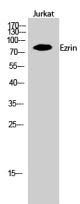
ELISA: 1: 40000

Not yet tested in other applications.

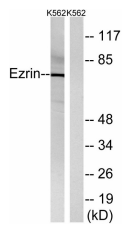
Images



Western Blot analysis of various cells using Ezrin Polyclonal Antibody



Western Blot analysis of Jurkat cells using Ezrin Polyclonal Antibody



Western blot analysis of lysates from K562 cells, using Ezrin Antibody. The lane on the right is blocked with the synthesized peptide.

Storage

-20°C for one year

501 Changsheng S Rd, Nanhu Dist, Jiaxing, Zhejiang, China

Tel: 86 21 31007137 | E-mail: save@bt-laboratory.com | www.bt-laboratory.com