

## FAST-1/2 Polyclonal Antibody

### Description

Product type	Primary Antibody
Code	BT-AP03167
Host	Rabbit
Isotype	IgG
Size	20ul, 50ul, 100ul
Immunogen	The antiserum was produced against synthesized peptide derived from human FOXH1. AA range:10-59
Mol wt	39257
Species reactivity	Human, Mouse
Clonality	Polyclonal
Recommended application	WB, IF, ELISA
Concentration	1 mg/ml
Full name	FAST-1/2 Antibody
Synonyms	FOXH1; FAST1; FAST2; Forkhead box protein H1; Forkhead activin signal transducer 1; Fast-1; hFAST-1; Forkhead activin signal transducer 2; Fast-2

This product is for research use only, not for use in human, therapeutic or diagnostic procedure.

### Background

FOXH1 encodes a human homolog of Xenopus forkhead activin signal transducer-1. Forkhead box protein H1 binds SMAD2 and activates an activin response element via binding the DNA motif TGT (G/T) (T/G) ATT.

### Recommended Dilution

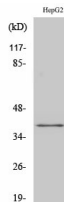
WB: 1: 500 - 1: 2000

IF: 1: 200 - 1: 1000

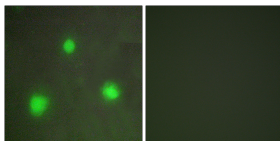
ELISA: 1: 10000

Not yet tested in other applications.

### Images



Western Blot analysis of various cells using FAST-1/2 Polyclonal Antibody cells nucleus.



Immunofluorescence analysis of A549 cells, using FOXH1 Antibody. The picture on the right is blocked with the synthesized peptide.

### Storage

-20°C for one year