

## FoxL1 Polyclonal Antibody

### Description

<b>Product type</b>	Primary Antibody
<b>Code</b>	BT-AP03322
<b>Host</b>	Rabbit
<b>Isotype</b>	IgG
<b>Size</b>	20ul, 50ul, 100ul
<b>Immunogen</b>	The antiserum was produced against synthesized peptide derived from human FOXL1. AA range:121-170
<b>Mol wt</b>	36490
<b>Species reactivity</b>	Human, Monkey
<b>Clonality</b>	Polyclonal
<b>Recommended application</b>	WB, IHC-p, ELISA
<b>Concentration</b>	1 mg/ml
<b>Full name</b>	FoxL1 Antibody
<b>Synonyms</b>	FOXL1; FKHL11; FREAC7; Forkhead box protein L1; Forkhead-related protein FKHL11; Forkhead-related transcription factor 7; FREAC-7

This product is for research use only, not for use in human, therapeutic or diagnostic procedure.

### Background

FOXL1 encodes a member of the forkhead/winged helix-box (FOX) family of transcription factors. FOX transcription factors are characterized by a distinct DNA-binding forkhead domain and play critical roles in the regulation of multiple processes including metabolism, cell proliferation and gene expression during ontogenesis.

### Recommended Dilution

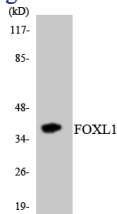
WB: 1: 500 - 1: 2000

IHC: 1: 100 - 1: 300

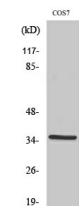
ELISA: 1: 20000

Not yet tested in other applications.

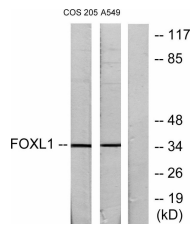
### Images



Western blot analysis of the lysates from HeLa cells using FOXL1 antibody.



Western Blot analysis of various cells using FoxL1 Polyclonal Antibody cells nucleus.



Western blot analysis of lysates from COS7 and A549 cells, using FOXL1 Antibody. The lane on the right is blocked with the synthesized peptide.

### Storage

-20°C for one year

501 Changsheng S Rd, Nanhu Dist, Jiaxing, Zhejiang, China

Tel: 86 21 31007137 | E-mail: [save@bt-laboratory.com](mailto:save@bt-laboratory.com) | [www.bt-laboratory.com](http://www.bt-laboratory.com)