

## FoxO3A Polyclonal Antibody

### Description

<b>Product type</b>	Primary Antibody
<b>Code</b>	BT-AP03334
<b>Host</b>	Rabbit
<b>Isotype</b>	IgG
<b>Size</b>	20ul, 50ul, 100ul
<b>Immunogen</b>	The antiserum was produced against synthesized peptide derived from human FKHRL1. AA range:220-269
<b>Mol wt</b>	71277
<b>Species reactivity</b>	Human, Mouse, Rat
<b>Clonality</b>	Polyclonal
<b>Recommended application</b>	WB, IHC-p, IF, ELISA
<b>Concentration</b>	1 mg/ml
<b>Full name</b>	FoxO3A Antibody
<b>Synonyms</b>	FOXO3; FKHRL1; FOXO3A; Forkhead box protein O3; AF6q21 protein; Forkhead in rhabdomyosarcoma-like 1

This product is for research use only, not for use in human, therapeutic or diagnostic procedure.

### Background

FOXO3 belongs to the forkhead family of transcription factors which are characterized by a distinct forkhead domain. FOXO3 likely functions as a trigger for apoptosis through expression of genes necessary for cell death. Translocation of this gene with the MLL gene is associated with secondary acute leukemia. Alternatively spliced transcript variants encoding the same protein have been observed.

### Recommended Dilution

WB: 1: 500 - 1: 2000

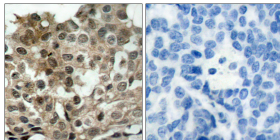
IHC: 1: 100 - 1: 300

IF: 1: 200 - 1: 1000

ELISA: 1: 20000

Not yet tested in other applications.

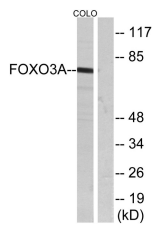
### Images



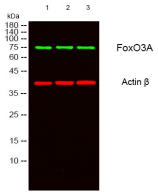
Immunohistochemistry analysis of paraffin-embedded human breast carcinoma tissue, using FKHRL1 Antibody. The picture on the right is blocked with the synthesized peptide.



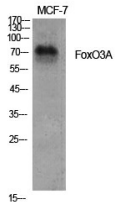
Western Blot analysis of Jurkat cells using FoxO3A Polyclonal Antibody diluted at 1:1000



Western blot analysis of lysates from COLO205 cells, treated with serum, using FKHL1 Antibody.  
The lane on the right is blocked with the synthesized peptide.



Western blot analysis of lysates from 1)MCF-7 , 2)COLO205, 3) HELA cells, (Green) primary antibody was diluted at 1:1000, 4° over night, secondary antibody(cat:RS23920)was diluted at 1:10000, 37° 1hour. (Red) Actin β Monoclonal Antibody(5B7) (cat:YM3028) antibody was diluted at 1:5000 as loading control, 4° over night,secondary antibody(cat:RS23710)was diluted at 1:10000, 37° 1hour.



Western Blot analysis of various cells using FoxO3A Polyclonal Antibody diluted at 1:1000

### Storage

-20°C for one year

501 Changsheng S Rd, Nanhu Dist, Jiaxing, Zhejiang, China

Tel: 86 21 31007137 | E-mail: [save@bt-laboratory.com](mailto:save@bt-laboratory.com) | [www.bt-laboratory.com](http://www.bt-laboratory.com)