

## Frizzled-1 Polyclonal Antibody

### Description

<b>Product type</b>	Primary Antibody
<b>Code</b>	BT-AP03353
<b>Host</b>	Rabbit
<b>Isotype</b>	IgG
<b>Size</b>	20ul, 50ul, 100ul
<b>Immunogen</b>	The antiserum was produced against synthesized peptide derived from human FZD1. AA range:16-65
<b>Mol wt</b>	71158
<b>Species reactivity</b>	Human
<b>Clonality</b>	Polyclonal
<b>Recommended application</b>	WB, IF, ELISA
<b>Concentration</b>	1 mg/ml
<b>Full name</b>	Frizzled-1 Antibody
<b>Synonyms</b>	FZD1; Frizzled-1; Fz-1; hFz1; FzE1

This product is for research use only, not for use in human, therapeutic or diagnostic procedure.

### Background

Members of the frizzled gene family encode 7-transmembrane domain proteins that are receptors for Wnt signaling proteins. The FZD1 (frizzled class receptor 1) protein contains a signal peptide, a cysteine-rich domain in the N-terminal extracellular region, 7 transmembrane domains, and a C-terminal PDZ domain-binding motif. The FZD1 transcript is expressed in various tissues.

### Recommended Dilution

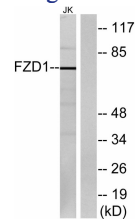
WB: 1: 500 - 1: 2000

IF: 1: 200 - 1: 1000

ELISA: 1: 20000

Not yet tested in other applications.

### Images



Western blot analysis of lysates from Jurkat cells, using FZD1 Antibody. The lane on the right is blocked with the synthesized peptide.

### Storage

-20°C for one year