

Fyb Polyclonal Antibody

Description

Product type	Primary Antibody
Code	BT-AP03395
Host	Rabbit
Isotype	IgG
Size	20ul, 50ul, 100ul
Immunogen	Synthesized peptide derived from Fyb . at AA range: 620-700
Mol wt	85387
Species reactivity	Human, Mouse, Rat
Clonality	Polyclonal
Recommended application	WB, ELISA
Concentration	1 mg/ml
Full name	Fyb Antibody
Synonyms	FYB; SLAP130; FYN-binding protein; Adhesion and degranulation promoting adaptor protein; ADAP; FYB-120/130; p120/p130; FYN-T-binding protein; SLAP-130; SLP-76-associated phosphoprotein

This product is for research use only, not for use in human, therapeutic or diagnostic procedure.

Background

FYN-binding protein encoded by FYB is an adapter for the FYN protein and LCP2 signaling cascades in T-cells. FYN-binding protein is involved in platelet activation and controls the expression of interleukin-2. Three transcript variants encoding different isoforms have been found for this gene.

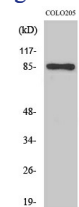
Recommended Dilution

WB: 1: 500 - 1: 2000

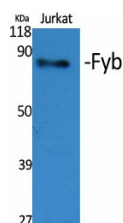
ELISA: 1: 40000

Not yet tested in other applications.

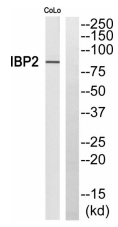
Images



Western Blot analysis of COLO205 cells using Fyb Polyclonal Antibody



Western Blot analysis of various cells using Fyb Polyclonal Antibody



Western blot analysis of FYB Antibody. The lane on the right is blocked with the FYB peptide.

Storage

-20°C for one year

501 Changsheng S Rd, Nanhu Dist, Jiaxing, Zhejiang, China

Tel: 86 21 31007137 | E-mail: save@bt-laboratory.com | www.bt-laboratory.com