

## G3BP2 Polyclonal Antibody

### Description

<b>Product type</b>	Primary Antibody
<b>Code</b>	BT-AP03402
<b>Host</b>	Rabbit
<b>Isotype</b>	IgG
<b>Size</b>	20ul, 50ul, 100ul
<b>Immunogen</b>	The antiserum was produced against synthesized peptide derived from human G3BP2. AA range:433-482
<b>Mol wt</b>	54121
<b>Species reactivity</b>	Human, Mouse
<b>Clonality</b>	Polyclonal
<b>Recommended application</b>	WB, ELISA
<b>Concentration</b>	1 mg/ml
<b>Full name</b>	G3BP2 Antibody
<b>Synonyms</b>	G3BP2; KIAA0660; Ras GTPase-activating protein-binding protein 2; G3BP-2; GAP SH3 domain-binding protein 2

This product is for research use only, not for use in human, therapeutic or diagnostic procedure.

### Background

Ras GTPase-activating protein-binding protein 2 is an enzyme that in humans is encoded by the G3BP2 gene, probable scaffold protein that may be involved in mRNA transport. G3BP2 has been shown to interact with I $\kappa$ B $\alpha$ . Among its related pathways are TNF-alpha/NF-kB Signaling Pathway. Gene Ontology (GO) annotations related to this gene include nucleic acid binding and nucleotide binding. An important paralog of this gene is G3BP1.

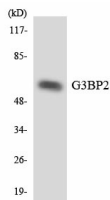
### Recommended Dilution

WB: 1: 500 - 1: 2000

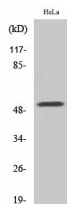
ELISA: 1: 10000

Not yet tested in other applications.

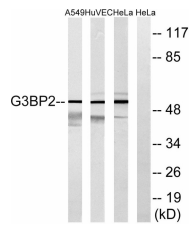
### Images



Western blot analysis of the lysates from HeLa cells using G3BP2 antibody.



Western Blot analysis of various cells using G3BP2 Polyclonal Antibody



### Storage

-20°C for one year

501 Changsheng S Rd, Nanhu Dist, Jiaxing, Zhejiang, China

Tel: 86 21 31007137 | E-mail: [save@bt-laboratory.com](mailto:save@bt-laboratory.com) | [www.bt-laboratory.com](http://www.bt-laboratory.com)