

GABAA R Gamma1 Polyclonal Antibody

Description

Product type	Primary Antibody
Code	BT-AP03430
Host	Rabbit
Isotype	IgG
Size	20ul, 50ul, 100ul
Immunogen	The antiserum was produced against synthesized peptide derived from human GABRG1. AA range:11-60
Mol wt	53667
Species reactivity	Human, Mouse, Rat
Clonality	Polyclonal
Recommended application	WB, IHC-p, ELISA
Concentration	1 mg/ml
Full name	GABAA Rgamma1 Antibody
Synonyms	GABRG1; Gamma-aminobutyric acid receptor subunit gamma-1; GABA(A) receptor subunit gamma-1

This product is for research use only, not for use in human, therapeutic or diagnostic procedure.

Background

The gamma-aminobutyric acid type A receptor gamma1 subunit encoded by GABRG1 belongs to the ligand-gated ionic channel family. It is an integral membrane protein and plays an important role in inhibiting neurotransmission by binding to the benzodiazepine receptor and opening an integral chloride channel. GABRG1 is clustered with three other family members on chromosome 4.

Recommended Dilution

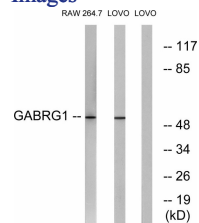
WB: 1: 500 - 1: 2000

IHC: 1: 100 - 1: 300

ELISA: 1: 20000

Not yet tested in other applications.

Images



Western blot analysis of lysates from LOVO and RAW264.7 cells, using GABRG1 Antibody. The lane on the right is blocked with the synthesized peptide.

Storage

-20°C for one year