

GATA-1 Polyclonal Antibody

Description

Product type	Primary Antibody
Code	BT-AP03481
Host	Rabbit
Isotype	IgG
Size	20ul, 50ul, 100ul
Immunogen	The antiserum was produced against synthesized peptide derived from human GATA1. AA range:109-158
Mol wt	42751
Species reactivity	Human, Mouse, Rat
Clonality	Polyclonal
Recommended application	WB, IHC-p, IP, IF, ELISA
Concentration	1 mg/ml
Full name	GATA-1 Antibody
Synonyms	GATA1; ERYF1; GF1; Erythroid transcription factor; Eryf1; GATA-binding factor 1; GATA-1; GF-1; NF-E1 DNA-binding protein

This product is for research use only, not for use in human, therapeutic or diagnostic procedure.

Background

GATA1 encodes GATA binding protein 1 which belongs to the GATA family of transcription factors. GATA binding protein 1 plays an important role in erythroid development by regulating the switch of fetal hemoglobin to adult hemoglobin. Mutations in GATA1 have been associated with X-linked dyserythropoietic anemia and thrombocytopenia.

Recommended Dilution

WB: 1: 500 - 1: 2000

IHC: 1: 100 - 1: 300

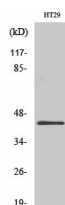
IF: 1: 200 - 1: 1000

IP: 2 - 5 ug: mg lysate

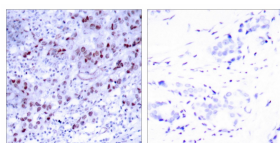
ELISA: 1: 10000

Not yet tested in other applications.

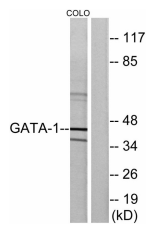
Images



Western Blot analysis of various cells using GATA-1 Polyclonal Antibody diluted at 1:2000 cells nucleus.



Immunohistochemistry analysis of paraffin-embedded human breast carcinoma tissue, using GATA1 Antibody. The picture on the right is blocked with the synthesized peptide.



Storage

-20°C for one year

501 Changsheng S Rd, Nanhu Dist, Jiaxing, Zhejiang, China

Tel: 86 21 31007137 | E-mail: save@bt-laboratory.com | www.bt-laboratory.com