

## G-CSFR Polyclonal Antibody

### Description

Product type	Primary Antibody
Code	BT-AP03522
Host	Rabbit
Isotype	IgG
Size	20ul, 50ul, 100ul
Immunogen	Synthesized peptide derived from the Internal region of human G-CSFR.
Mol wt	72766
Species reactivity	Human
Clonality	Polyclonal
Recommended application	WB, ELISA
Concentration	1 mg/ml
Full name	G-CSFR Antibody
Synonyms	CSF3R; GCSFR; Granulocyte colony-stimulating factor receptor; G-CSF receptor; G-CSF-R; CD antigen CD114

This product is for research use only, not for use in human, therapeutic or diagnostic procedure.

### Background

Glutamate-cysteine ligase, also known as gamma-glutamylcysteine synthetase is the first rate-limiting enzyme of glutathione synthesis. The enzyme consists of two subunits, a heavy catalytic subunit and a light regulatory subunit. GCLC encodes Glutamate--cysteine ligase catalytic subunit, while the regulatory subunit is derived from a different gene located on chromosome 1p22-p21. Mutations at GCLC have been associated with hemolytic anemia due to deficiency of gamma-glutamylcysteine synthetase and susceptibility to myocardial infarction.

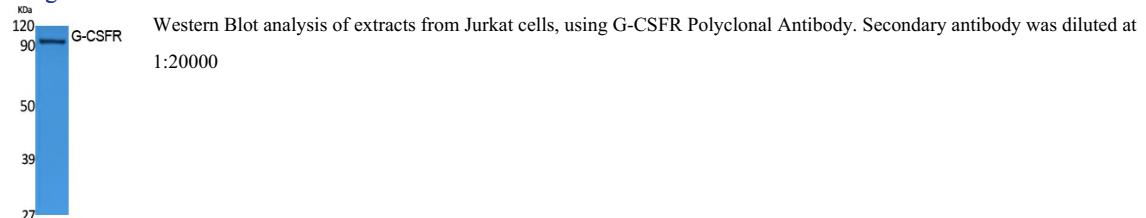
### Recommended Dilution

WB: 1: 500 - 1: 2000

ELISA: 1: 10000

Not yet tested in other applications.

### Images



### Storage

-20°C for one year