

GPR101 Polyclonal Antibody

Description

Product type	Primary Antibody
Code	BT-AP03671
Host	Rabbit
Isotype	IgG
Size	20ul, 50ul, 100ul
Immunogen	The antiserum was produced against synthesized peptide derived from human GPR101. AA range:451-500
Mol wt	56716
Species reactivity	Human, Mouse, Monkey
Clonality	Polyclonal
Recommended application	WB, IF, ELISA
Concentration	1 mg/ml
Full name	GPR101 Antibody
Synonyms	GPR101; Probable G-protein coupled receptor 101

This product is for research use only, not for use in human, therapeutic or diagnostic procedure.

Background

Probable G-protein coupled receptor 101 encoded by GPR101 is an orphan G protein-coupled receptor of unknown function. Probable G-protein coupled receptor 101 is a member of a family of proteins that contain seven transmembrane domains and transduce extracellular signals through heterotrimeric G proteins.

Recommended Dilution

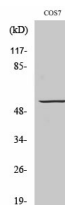
WB: 1: 500 - 1: 2000

IF: 1: 200 - 1: 1000

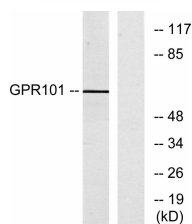
ELISA: 1: 5000

Not yet tested in other applications.

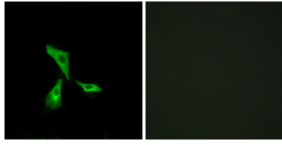
Images



Western Blot analysis of various cells using GPR101 Polyclonal Antibody diluted at 1:500



Western blot analysis of lysates from COS7 cells, using GPR101 Antibody. The lane on the right is blocked with the synthesized peptide.



Immunofluorescence analysis of HeLa cells, using GPR101 Antibody. The picture on the right is blocked with the synthesized peptide.

Storage

-20°C for one year

501 Changsheng S Rd, Nanhu Dist, Jiaxing, Zhejiang, China

Tel: 86 21 31007137 | E-mail: save@bt-laboratory.com | www.bt-laboratory.com