

GPR91 Polyclonal Antibody

Description

Product type	Primary Antibody
Code	BT-AP03772
Host	Rabbit
Isotype	IgG
Size	20ul, 50ul, 100ul
Immunogen	The antiserum was produced against synthesized peptide derived from human SUCNR1. AA range:100-149
Mol wt	38283
Species reactivity	Human, Mouse, Rat
Clonality	Polyclonal
Recommended application	WB, IF, ELISA
Concentration	1 mg/ml
Full name	GPR91 Antibody
Synonyms	SUCNR1; GPR91; Succinate receptor 1; G-protein coupled receptor 91; P2Y purinoceptor 1-like

This product is for research use only, not for use in human, therapeutic or diagnostic procedure.

Background

SUCNR1 (succinate receptor 1) encodes a G-protein-coupled receptor for succinate, an intermediate molecule of the citric acid cycle. It is involved in the promotion of hematopoietic progenitor cell development, and it has a potential role in renovascular hypertension which has known correlations to renal failure, diabetes and atherosclerosis.

Recommended Dilution

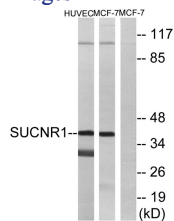
WB: 1: 500 - 1: 2000

IF: 1: 200 - 1: 1000

ELISA: 1: 10000

Not yet tested in other applications.

Images



Western blot analysis of lysates from HUVEC and MCF-7 cells, using SUCNR1 Antibody. The lane on the right is blocked with the synthesized peptide.

Storage

-20°C for one year