

## GRIN1 Polyclonal Antibody

### Description

<b>Product type</b>	Primary Antibody
<b>Code</b>	BT-AP03812
<b>Host</b>	Rabbit
<b>Isotype</b>	IgG
<b>Size</b>	20ul, 50ul, 100ul
<b>Immunogen</b>	The antiserum was produced against synthesized peptide derived from human GPRIN1. AA range:231-280
<b>Mol wt</b>	102371
<b>Species reactivity</b>	Human
<b>Clonality</b>	Polyclonal
<b>Recommended application</b>	WB, ELISA
<b>Concentration</b>	1 mg/ml
<b>Full name</b>	GRIN1 Antibody
<b>Synonyms</b>	GPRIN1; KIAA1893; G protein-regulated inducer of neurite outgrowth 1; GRIN1

**This product is for research use only, not for use in human, therapeutic or diagnostic procedure.**

### Background

GRIN1 is a Protein Coding gene. G Protein Regulated Inducer Of Neurite Outgrowth 1 may be involved in neurite outgrowth. Diseases associated with GPRIN1 include pustulosis of palm and sole. Among its related pathways are Signaling by GPCR and Immune System. Gene Ontology (GO) annotations related to this gene include phosphoprotein binding. An important paralog of this gene is GPRIN2.

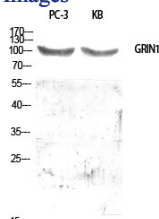
### Recommended Dilution

WB: 1: 500 - 1: 2000

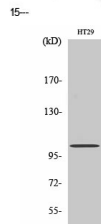
ELISA: 1: 40000

Not yet tested in other applications.

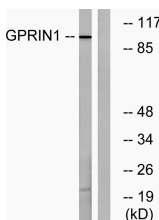
### Images



Western Blot analysis of various cells using GRIN1 Polyclonal Antibody diluted at 1:500



Western Blot analysis of HT29 cells using GRIN1 Polyclonal Antibody diluted at 1:500



Western blot analysis of lysates from HT-29 cells, using GPRIN1 Antibody. The lane on the right is blocked with the synthesized peptide.

## Storage

-20°C for one year

501 Changsheng S Rd, Nanhu Dist, Jiaxing, Zhejiang, China

Tel: 86 21 31007137 | E-mail: [save@bt-laboratory.com](mailto:save@bt-laboratory.com) | [www.bt-laboratory.com](http://www.bt-laboratory.com)