

GRIN3 Polyclonal Antibody

Description

Product type	Primary Antibody
Code	BT-AP03816
Host	Rabbit
Isotype	IgG
Size	20ul, 50ul, 100ul
Immunogen	The antiserum was produced against synthesized peptide derived from human GPRIN3. AA range:131-180
Mol wt	82439
Species reactivity	Human
Clonality	Polyclonal
Recommended application	IHC-p, ELISA
Concentration	1 mg/ml
Full name	GRIN3 Antibody
Synonyms	GPRIN3; KIAA2027; G protein-regulated inducer of neurite outgrowth 3; GRIN3

This product is for research use only, not for use in human, therapeutic or diagnostic procedure.

Background

May be involved in neurite outgrowth.

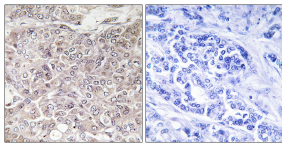
Recommended Dilution

IHC: 1: 100 - 1: 300

ELISA: 1: 40000

Not yet tested in other applications.

Images



Immunohistochemistry analysis of paraffin-embedded human breast carcinoma, using GPRIN3 Antibody. The picture on the right is blocked with the synthesized peptide.

Storage

-20°C for one year

501 Changsheng S Rd, Nanhu Dist, Jiaxing, Zhejiang, China

Tel: 86 21 31007137 | E-mail: save@bt-laboratory.com | www.bt-laboratory.com