

HAT1 Polyclonal Antibody

Description

Product type	Primary Antibody
Code	BT-AP03892
Host	Rabbit
Isotype	IgG
Size	20ul, 50ul, 100ul
Immunogen	The antiserum was produced against synthesized peptide derived from human HAT. AA range:331-380
Mol wt	49513
Species reactivity	Human, Mouse, Rat
Clonality	Polyclonal
Recommended application	WB, ELISA
Concentration	1 mg/ml
Full name	HAT1 Antibody
Synonyms	HAT1; KAT1; Histone acetyltransferase type B catalytic subunit; Histone acetyltransferase 1

This product is for research use only, not for use in human, therapeutic or diagnostic procedure.

Background

The protein encoded by HAT1 (histone acetyltransferase 1) is a type B histone acetyltransferase (HAT) that is involved in the rapid acetylation of newly synthesized cytoplasmic histones, which are in turn imported into the nucleus for de novo deposition onto nascent DNA chains. Histone acetylation, particularly of histone H4, plays an important role in replication-dependent chromatin assembly. Specifically, this HAT can acetylate soluble but not nucleosomal histone H4 at lysines 5 and 12, and to a lesser degree, histone H2A at lysine 5. Alternatively spliced transcript variants have been identified for HAT1.

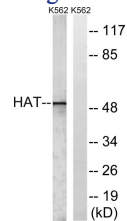
Recommended Dilution

WB: 1: 500 - 1: 2000

ELISA: 1: 5000

Not yet tested in other applications.

Images



Western blot analysis of lysates from K562 cells, using HAT Antibody. The lane on the right is blocked with the synthesized peptide.

Storage

-20°C for one year