

Hel-N1 Polyclonal Antibody

Description

Product type	Primary Antibody
Code	BT-AP03938
Host	Rabbit
Isotype	IgG
Size	20ul, 50ul, 100ul
Immunogen	The antiserum was produced against synthesized peptide derived from human ELAVL2. AA range:11-60
Mol wt	39504
Species reactivity	Human, Mouse, Rat
Clonality	Polyclonal
Recommended application	WB, ELISA
Concentration	1 mg/ml
Full name	Hel-N1 Antibody
Synonyms	ELAVL2; HUB; ELAV-like protein 2; ELAV-like neuronal protein 1; Hu-antigen B; HuB; Nervous system-specific RNA-binding protein Hel-N1

This product is for research use only, not for use in human, therapeutic or diagnostic procedure.

Background

ELAV-like protein 2 encoded by ELAVL2 is a neural-specific RNA-binding protein that is known to bind to several 3' UTRs, including its own and also that of FOS and ID. ELAV-like protein 2 may recognize a GAAA motif in the RNA. Three transcript variants encoding two different isoforms have been found for this gene.

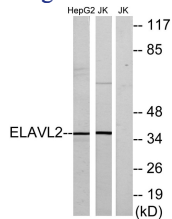
Recommended Dilution

WB: 1: 500 - 1: 2000

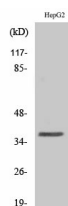
ELISA: 1: 20000

Not yet tested in other applications.

Images



Western blot analysis of lysates from HepG2 and Jurkat cells, using ELAVL2 Antibody. The lane on the right is blocked with the synthesized peptide.



Western Blot analysis of various cells using Hel-N1 Polyclonal Antibody

Storage

-20°C for one year

501 Changsheng S Rd, Nanhu Dist, Jiaxing, Zhejiang, China

Tel: 86 21 31007137 | E-mail: save@bt-laboratory.com | www.bt-laboratory.com