

## Hexim1 Polyclonal Antibody

### Description

<b>Product type</b>	Primary Antibody
<b>Code</b>	BT-AP03954
<b>Host</b>	Rabbit
<b>Isotype</b>	IgG
<b>Size</b>	20ul, 50ul, 100ul
<b>Immunogen</b>	The antiserum was produced against synthesized peptide derived from human HEXIM1. AA range:181-230
<b>Mol wt</b>	40623
<b>Species reactivity</b>	Human, Mouse, Rat
<b>Clonality</b>	Polyclonal
<b>Recommended application</b>	WB, IHC-p, IF, ELISA
<b>Concentration</b>	1 mg/ml
<b>Full name</b>	Hexim1 Antibody
<b>Synonyms</b>	HEXIM1; CLP1; EDG1; HIS1; MAQ1; Protein HEXIM1; Cardiac lineage protein 1; Estrogen down-regulated gene 1 protein; Hexamethylene bis-acetamide-inducible protein 1; Menage a quatre protein 1

**This product is for research use only, not for use in human, therapeutic or diagnostic procedure.**

### Background

Expression of HEXIM1 is induced by hexamethylene-bis-acetamide in vascular smooth muscle cells. This gene has no introns.

### Recommended Dilution

WB: 1: 500 - 1: 2000

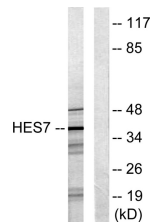
IHC: 1: 100 - 1: 300

IF: 1: 200 - 1: 1000

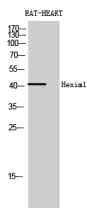
ELISA: 1: 10000

Not yet tested in other applications.

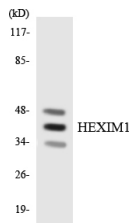
### Images



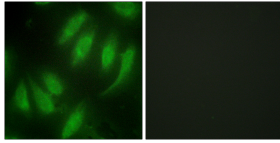
Western blot analysis of lysates from NIH/3T3 cells, using HEXIM1 Antibody. The lane on the right is blocked with the synthesized peptide.



Western Blot analysis of RAT-HEART cells using Hexim1 Polyclonal Antibody diluted at 1:2000



Western blot analysis of the lysates from HeLa cells using HEXIM1 antibody.



Immunofluorescence analysis of HeLa cells, using HEXIM1 Antibody. The picture on the right is blocked with the synthesized peptide.

### Storage

-20°C for one year

501 Changsheng S Rd, Nanhu Dist, Jiaxing, Zhejiang, China

Tel: 86 21 31007137 | E-mail: [save@bt-laboratory.com](mailto:save@bt-laboratory.com) | [www.bt-laboratory.com](http://www.bt-laboratory.com)