

## PDLI3 Rabbit Polyclonal Antibody

### Description

Product type	Primary Antibody
Code	BT-AP04094
Host	Rabbit
Isotype	IgG
Size	100ul, 50ul, 20ul
Immunogen	Synthesized peptide derived from human PDLI3
Mol wt	40040
Species reactivity	Human, Mouse, Rat
Clonality	Polyclonal
Recommended application	WB
Concentration	1 mg/ml
Full name	PDLI3
Synonyms	PDLI3

This product is for research use only, not for use in human, therapeutic or diagnostic procedure.

### Background

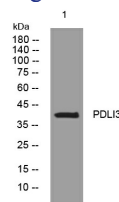
The protein encoded by this gene contains a PDZ domain and a LIM domain| indicating that it may be involved in cytoskeletal assembly. In support of this| the encoded protein has been shown to bind the spectrin-like repeats of alpha-actinin-2 and to colocalize with alpha-actinin-2 at the Z lines of skeletal muscle. Alternatively spliced transcript variants encoding multiple isoforms have been observed for this gene. Aberrant alternative splicing of this gene may play a role in myotonic dystrophy.

### Recommended Dilution

WB: 1: 500 - 1: 2000

Not yet tested in other applications.

### Images



Western blot analysis of lysates from HEK293 cells, primary antibody was diluted at 1:1000, 4°C overnight

### Storage

-20°C for 1 year