

HKR1 Polyclonal Antibody

Description

Product type	Primary Antibody
Code	BT-AP04124
Host	Rabbit
Isotype	IgG
Size	20ul, 50ul, 100ul
Immunogen	The antiserum was produced against synthesized peptide derived from human HKR1. AA range:141-190
Mol wt	73164
Species reactivity	Human
Clonality	Polyclonal
Recommended application	WB, IHC-p, IF, ELISA
Concentration	1 mg/ml
Full name	HKR1 Antibody
Synonyms	HKR1; ZNF875; Krueppel-related zinc finger protein 1; Protein HKR1; Zinc finger protein 875

This product is for research use only, not for use in human, therapeutic or diagnostic procedure.

Background

HKR1 is a Protein Coding gene. Krueppel-related zinc finger protein 1 may be involved in transcriptional regulation. Among its related pathways are Gene Expression. Gene Ontology (GO) annotations related to this gene include nucleic acid binding. An important paralog of this gene is ZNF169.

Recommended Dilution

WB: 1: 500 - 1: 2000

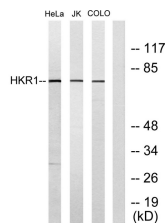
IHC: 1: 100 - 1: 300

IF: 1: 200 - 1: 1000

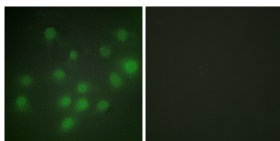
ELISA: 1: 5000

Not yet tested in other applications.

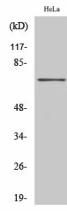
Images



Western blot analysis of lysates from HeLa, Jurkat, and COLO205 cells, using HKR1 Antibody. The lane on the right is blocked with the synthesized peptide.



Immunofluorescence analysis of HUVEC cells, using HKR1 Antibody. The picture on the right is blocked with the synthesized peptide.



Western Blot analysis of various cells using HKR1 Polyclonal Antibody cells nucleus.

Storage

-20°C for one year

501 Changsheng S Rd, Nanhu Dist, Jiaxing, Zhejiang, China

Tel: 86 21 31007137 | E-mail: save@bt-laboratory.com | www.bt-laboratory.com