

## HLX1 Polyclonal Antibody

### Description

<b>Product type</b>	Primary Antibody
<b>Code</b>	BT-AP04136
<b>Host</b>	Rabbit
<b>Isotype</b>	IgG
<b>Size</b>	20ul, 50ul, 100ul
<b>Immunogen</b>	The antiserum was produced against synthesized peptide derived from human HLX1. AA range:321-370
<b>Mol wt</b>	50789
<b>Species reactivity</b>	Human, Mouse, Rat
<b>Clonality</b>	Polyclonal
<b>Recommended application</b>	WB, IHC-p, IF, ELISA
<b>Concentration</b>	1 mg/ml
<b>Full name</b>	HLX1 Antibody
<b>Synonyms</b>	HLX; HLX1; H2.0-like homeobox protein; Homeobox protein HB24; Homeobox protein HLX1

**This product is for research use only, not for use in human, therapeutic or diagnostic procedure.**

### Background

HLX is a Protein Coding gene. H2.0 Like Homeobox is a transcription factor required for TBX21/T-bet-dependent maturation of Th1 cells as well as maintenance of Th1-specific gene expression. Involved in embryogenesis and hematopoiesis Diseases associated with HLX include ovarian endodermal sinus tumor and ovarian primitive germ cell tumor. Among its related pathways are IL12-mediated signaling events. Gene Ontology (GO) annotations related to HLX include sequence-specific DNA binding. An important paralog of this gene is BARX2.

### Recommended Dilution

WB: 1: 500 - 1: 2000

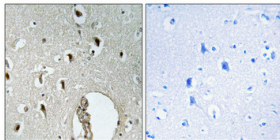
IHC: 1: 100 - 1: 300

IF: 1: 200 - 1: 1000

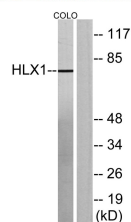
ELISA: 1: 10000

Not yet tested in other applications.

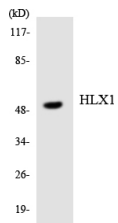
### Images



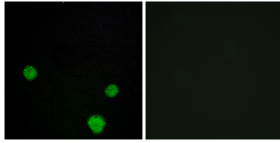
Immunohistochemical analysis of paraffin-embedded Human brain. Antibody was diluted at 1:100(4° overnight). High-pressure and temperature Tris-EDTA,pH8.0 was used for antigen retrieval. Negative contrl (right) obtained from antibody was pre-absorbed by immunogen peptide.



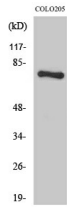
Western blot analysis of lysates from COLO205 cells, using HLX1 Antibody. The lane on the right is blocked with the synthesized peptide.



Western blot analysis of the lysates from HeLa cells using HLX1 antibody.



Immunofluorescence analysis of MCF7 cells, using HLX1 Antibody. The picture on the right is blocked with the synthesized peptide.



Western Blot analysis of various cells using HLX1 Polyclonal Antibody diluted at 1:1000

### Storage

-20°C for one year

501 Changsheng S Rd, Nanhu Dist, Jiaxing, Zhejiang, China

Tel: 86 21 31007137 | E-mail: [save@bt-laboratory.com](mailto:save@bt-laboratory.com) | [www.bt-laboratory.com](http://www.bt-laboratory.com)