

## HMG-1 (Acetyl Lys12) Polyclonal Antibody

### Description

<b>Product type</b>	Primary Antibody
<b>Code</b>	BT-AP04139
<b>Host</b>	Rabbit
<b>Isotype</b>	IgG
<b>Size</b>	20ul, 50ul, 100ul
<b>Immunogen</b>	Synthesized acetyl-peptide derived from the N-terminal region of human HMG-1 around the acetylation site of K12.
<b>Mol wt</b>	24894
<b>Species reactivity</b>	Human, Mouse, Rat
<b>Clonality</b>	Polyclonal
<b>Recommended application</b>	WB, IHC-p, ELISA
<b>Concentration</b>	1 mg/ml
<b>Full name</b>	HMG-1 (Acetyl Lys12) Antibody
<b>Synonyms</b>	HMGB1; HMG1; High mobility group protein B1; High mobility group protein 1; HMG-1

This product is for research use only, not for use in human, therapeutic or diagnostic procedure.

### Background

HMGB1 encodes a protein that belongs to the High Mobility Group-box superfamily. The encoded non-histone, nuclear DNA-binding protein regulates transcription, and is involved in organization of DNA. High mobility group box 1 plays a role in several cellular processes, including inflammation, cell differentiation and tumor cell migration. Multiple pseudogenes of HMGB1 have been identified. Alternative splicing results in multiple transcript variants that encode the same protein.

### Recommended Dilution

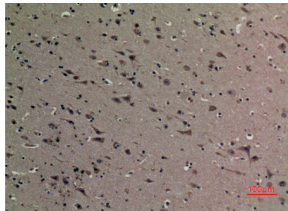
WB: 1: 500 - 1: 2000

IHC-p: 1: 100 - 300

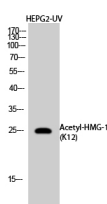
ELISA: 1: 10000

Not yet tested in other applications.

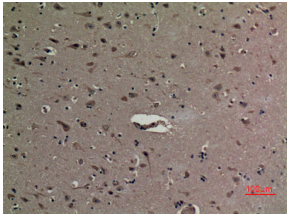
### Images



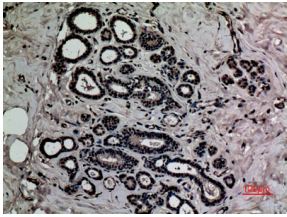
Immunohistochemical analysis of paraffin-embedded human-brain, antibody was diluted at 1:100



Western Blot analysis of HepG2 cells treated with UV using Acetyl-HMG-1 (K12) Polyclonal Antibody. Antibody was diluted at 1:1000. Secondary antibody was diluted at 1:20000



Immunohistochemical analysis of paraffin-embedded human-brain, antibody was diluted at 1:100



Immunohistochemical analysis of paraffin-embedded human-breast, antibody was diluted at 1:100

### Storage

-20°C for one year

501 Changsheng S Rd, Nanhu Dist, Jiaxing, Zhejiang, China

Tel: 86 21 31007137 | E-mail: [save@bt-laboratory.com](mailto:save@bt-laboratory.com) | [www.bt-laboratory.com](http://www.bt-laboratory.com)