

HMG-1 Polyclonal Antibody

Description

Product type	Primary Antibody
Code	BT-AP04142
Host	Rabbit
Isotype	IgG
Size	20ul, 50ul, 100ul
Immunogen	The antiserum was produced against synthesized peptide derived from human HMGB1. AA range:131-180
Mol wt	24894
Species reactivity	Human, Mouse, Rat
Clonality	Polyclonal
Recommended application	WB, IHC-p, IF, IP, ELISA
Concentration	1 mg/ml
Full name	HMG-1 Antibody
Synonyms	HMGB1; HMG1; High mobility group protein B1; High mobility group protein 1; HMG-1

This product is for research use only, not for use in human, therapeutic or diagnostic procedure.

Background

HMGB1 encodes high mobility group protein B1 that belongs to the High Mobility Group-box superfamily. The encoded non-histone, nuclear DNA-binding protein regulates transcription, and is involved in organization of DNA. This protein plays a role in several cellular processes, including inflammation, cell differentiation and tumor cell migration. Multiple pseudogenes of this gene have been identified. Alternative splicing results in multiple transcript variants that encode the same protein.

Recommended Dilution

WB: 1: 500 - 1: 2000

IHC: 1: 100 - 1: 300

IF: 1: 200 - 1: 1000

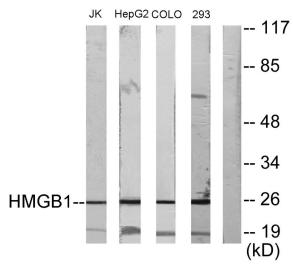
ELISA: 1: 20000

Not yet tested in other applications.

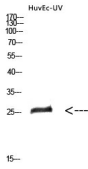
Images



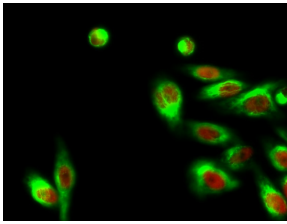
Western Blot analysis of Jurkat cells using HMG-1 Polyclonal Antibody diluted at 1:2000 cells nucleus.



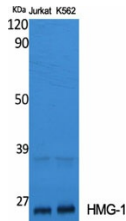
Western blot analysis of lysates from Jurkat, HepG2, COLO205, and 293 cells, using HMGB1 Antibody. The lane on the right is blocked with the synthesized peptide.



Western Blot analysis of huvec-uv cells using HMG-1 Polyclonal Antibody diluted at 1:2000 cells nucleus.



Immunofluorescence analysis of Hela cell. 1, HMG-1 Polyclonal Antibody (red) was diluted at 1:200 (4° overnight). p53 Monoclonal Antibody (6C4) (green) was diluted at 1:200 (4° overnight). 2, Goat Anti Rabbit Alexa Fluor 594 was diluted at 1:1000 (room temperature, 50min). Goat Anti Mouse Alexa Fluor 488 was diluted at 1:1000 (room temperature, 50min).



Western Blot analysis of various cells using HMG-1 Polyclonal Antibody diluted at 1:2000 cells nucleus.

Storage

-20°C for one year

501 Changsheng S Rd, Nanhui Dist, Jiaxing, Zhejiang, China

Tel: 86 21 31007137 | E-mail: save@bt-laboratory.com | www.bt-laboratory.com