

## HNF-3 Alpha/Beta/Gamma (Acetyl Lys264/253/211) Polyclonal Antibody

### Description

<b>Product type</b>	Primary Antibody
<b>Code</b>	BT-AP04154
<b>Host</b>	Rabbit
<b>Isotype</b>	IgG
<b>Size</b>	20ul, 50ul, 100ul
<b>Immunogen</b>	The antiserum was produced against synthesized Acetyl-peptide derived from human FOXA1 around the Acetylation site of Lys265. AA range:231-280
<b>Mol wt</b>	49148/48306/37140
<b>Species reactivity</b>	Human, Mouse, Rat
<b>Clonality</b>	Polyclonal
<b>Recommended application</b>	WB, ELISA
<b>Concentration</b>	1 mg/ml
<b>Full name</b>	HNF-3alpha/beta/gamma (Acetyl Lys264/253/211) Antibody
<b>Synonyms</b>	FOXA1; HNF3A; TCF3A; Hepatocyte nuclear factor 3-alpha; HNF-3-alpha; HNF-3A; Forkhead box protein A1; Transcription factor 3A; TCF-3A; FOXA2; HNF3B; TCF3B; Hepatocyte nuclear factor 3-beta; HNF-3-beta

This product is for research use only, not for use in human, therapeutic or diagnostic procedure.

### Background

FOXA1 encodes a member of the forkhead class of DNA-binding proteins. These hepatocyte nuclear factors are transcriptional activators for liver-specific transcripts such as albumin and transthyretin, and they also interact with chromatin. Similar family members in mice have roles in the regulation of metabolism and in the differentiation of the pancreas and liver.

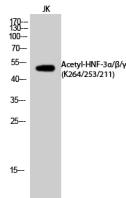
### Recommended Dilution

WB: 1: 500 - 1: 2000

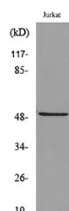
ELISA: 1: 20000

Not yet tested in other applications.

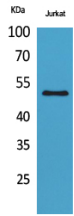
### Images



Western Blot analysis of JK cells using Acetyl-HNF-3 $\alpha$ / $\beta$ / $\gamma$  (K264/253/211) Polyclonal Antibody. Secondary antibody was diluted at 1:20000



Western blot analysis of lysate from Jurkat cells, using FOXA1 (Acetyl-Lys265) Antibody.



Western Blot analysis of Jurkat cells using Acetyl-HNF-3 $\alpha$ / $\beta$ / $\gamma$  (K264/253/211) Polyclonal Antibody. Secondary antibody was diluted at 1:20000

### Storage

-20°C for one year

501 Changsheng S Rd, Nanhu Dist, Jiaxing, Zhejiang, China

Tel: 86 21 31007137 | E-mail: [save@bt-laboratory.com](mailto:save@bt-laboratory.com) | [www.bt-laboratory.com](http://www.bt-laboratory.com)