

## hnRNP C1/C2 Polyclonal Antibody

### Description

<b>Product type</b>	Primary Antibody
<b>Code</b>	BT-AP04168
<b>Host</b>	Rabbit
<b>Isotype</b>	IgG
<b>Size</b>	20ul, 50ul, 100ul
<b>Immunogen</b>	The antiserum was produced against synthesized peptide derived from human hnRNP C1/C2. AA range:241-290
<b>Mol wt</b>	33670
<b>Species reactivity</b>	Human, Mouse, Rat
<b>Clonality</b>	Polyclonal
<b>Recommended application</b>	WB, IHC-p, IF, ELISA
<b>Concentration</b>	1 mg/ml
<b>Full name</b>	hnRNP C1/C2 Antibody
<b>Synonyms</b>	HNRNPC; HNRPC; Heterogeneous nuclear ribonucleoproteins C1/C2; hnRNP C1/C2

**This product is for research use only, not for use in human, therapeutic or diagnostic procedure.**

### Background

HNRNPC belongs to the subfamily of ubiquitously expressed heterogeneous nuclear ribonucleoproteins (hnRNPs). The hnRNPs are RNA binding proteins and they complex with heterogeneous nuclear RNA (hnRNA). These proteins are associated with pre-mRNAs in the nucleus and appear to influence pre-mRNA processing and other aspects of mRNA metabolism and transport. While all of the hnRNPs are present in the nucleus, some seem to shuttle between the nucleus and the cytoplasm. The hnRNP proteins have distinct nucleic acid binding properties. Heterogeneous nuclear ribonucleoproteins C1/C2 encoded by HNRNPC can act as a tetramer and is involved in the assembly of 40S hnRNP particles. Multiple transcript variants encoding at least two different isoforms have been described for this gene.

### Recommended Dilution

WB: 1: 500 - 1: 2000

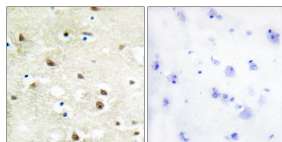
IHC: 1: 100 - 1: 300

IF: 1: 200 - 1: 1000

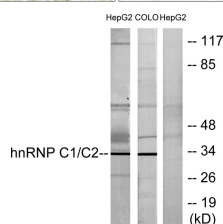
ELISA: 1: 20000

Not yet tested in other applications.

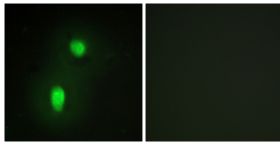
### Images



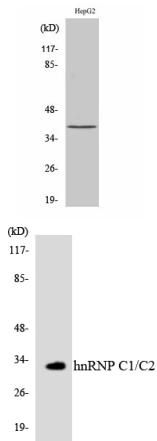
Immunohistochemistry analysis of paraffin-embedded human brain tissue, using hnRNP C1/C2 Antibody. The picture on the right is blocked with the synthesized peptide.



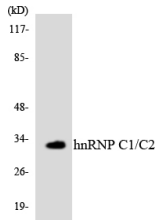
Western blot analysis of lysates from HepG2 and COLO205 cells, using hnRNP C1/C2 Antibody. The lane on the right is blocked with the synthesized peptide.



Immunofluorescence analysis of HUVEC cells, using hnRNP C1/C2 Antibody. The picture on the right is blocked with the synthesized peptide.



Western blot analysis of various cells using hnRNP C1/C2 Polyclonal Antibody diluted at 1:2000 cells nucleus.



Western blot analysis of the lysates from HT-29 cells using hnRNP C1/C2 antibody.

### Storage

-20°C for one year

501 Changsheng S Rd, Nanhu Dist, Jiaxing, Zhejiang, China

Tel: 86 21 31007137 | E-mail: [save@bt-laboratory.com](mailto:save@bt-laboratory.com) | [www.bt-laboratory.com](http://www.bt-laboratory.com)