

HoxA6 Polyclonal Antibody

Description

Product type	Primary Antibody
Code	BT-AP04188
Host	Rabbit
Isotype	IgG
Size	20ul, 50ul, 100ul
Immunogen	The antiserum was produced against synthesized peptide derived from human HOXA6. AA range:101-150
Mol wt	26339
Species reactivity	Human
Clonality	Polyclonal
Recommended application	WB, ELISA
Concentration	1 mg/ml
Full name	HoxA6 Antibody
Synonyms	HOXA6; HOX1B; Homeobox protein Hox-A6; Homeobox protein Hox-1B

This product is for research use only, not for use in human, therapeutic or diagnostic procedure.

Background

In vertebrates, the genes encoding the class of transcription factors called homeobox genes are found in clusters named A, B, C, and D on four separate chromosomes. Expression of these proteins is spatially and temporally regulated during embryonic development. HOXA6 is part of the A cluster on chromosome 7 and encodes a DNA-binding transcription factor which may regulate gene expression, morphogenesis, and differentiation.

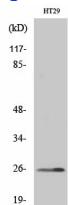
Recommended Dilution

WB: 1: 500 - 1: 2000

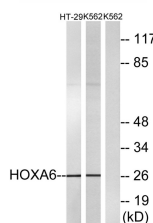
ELISA: 1: 40000

Not yet tested in other applications.

Images



Western Blot analysis of various cells using HoxA6 Polyclonal Antibody diluted at 1:1000 cells nucleus.



Western blot analysis of lysates from HT-29 and K562 cells, using HOXA6 Antibody. The lane on the right is blocked with the synthesized peptide.

Storage

-20°C for one year

501 Changsheng S Rd, Nanhu Dist, Jiaxing, Zhejiang, China

Tel: 86 21 31007137 | E-mail: save@bt-laboratory.com | www.bt-laboratory.com