

## HoxD10 Polyclonal Antibody

### Description

<b>Product type</b>	Primary Antibody
<b>Code</b>	BT-AP04195
<b>Host</b>	Rabbit
<b>Isotype</b>	IgG
<b>Size</b>	20ul, 50ul, 100ul
<b>Immunogen</b>	The antiserum was produced against synthesized peptide derived from human HOXD10. AA range:291-340
<b>Mol wt</b>	38411
<b>Species reactivity</b>	Human, Mouse
<b>Clonality</b>	Polyclonal
<b>Recommended application</b>	WB, ELISA
<b>Concentration</b>	1 mg/ml
<b>Full name</b>	HoxD10 Antibody
<b>Synonyms</b>	HOXD10; HOX4D; HOX4E; Homeobox protein Hox-D10; Homeobox protein Hox-4D; Homeobox protein Hox-4E

This product is for research use only, not for use in human, therapeutic or diagnostic procedure.

### Background

HOXD10 is a member of the Abd-B homeobox family and encodes a protein with a homeobox DNA-binding domain. It is included in a cluster of homeobox D genes located on chromosome 2. The homeobox D10 functions as a sequence-specific transcription factor that is expressed in the developing limb buds and is involved in differentiation and limb development. Mutations in this gene have been associated with Wilm's tumor and congenital vertical talus (also known as "rocker-bottom foot" deformity or congenital convex pes valgus) and/or a foot deformity resembling that seen in Charcot-Marie-Tooth disease.

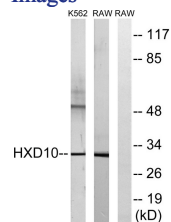
### Recommended Dilution

WB: 1: 500 - 1: 2000

ELISA: 1: 40000

Not yet tested in other applications.

### Images



Western blot analysis of lysates from K562 and RAW264.7 cells, using HOXD10 Antibody. The lane on the right is blocked with the synthesized peptide.

### Storage

-20°C for one year