

Id4 Polyclonal Antibody

Description

| | |
|--------------------------------|----------------------------------------------------------------------------------------------------------------------------------|
| Product type | Primary Antibody |
| Code | BT-AP04331 |
| Host | Rabbit |
| Isotype | IgG |
| Size | 20ul, 50ul, 100ul |
| Immunogen | The antiserum was produced against synthesized peptide derived from human ID4. AA range:1-50 |
| Mol wt | 16622 |
| Species reactivity | Human, Mouse, Rat |
| Clonality | Polyclonal |
| Recommended application | WB, IHC-p, ELISA |
| Concentration | 1 mg/ml |
| Full name | Id4 Antibody |
| Synonyms | ID4; BHLHB27; DNA-binding protein inhibitor ID-4; Class B basic helix-loop-helix protein 27; bHLHb27; Inhibitor of DNA binding 4 |

This product is for research use only, not for use in human, therapeutic or diagnostic procedure.

Background

ID4 encodes a member of the inhibitor of DNA binding (ID) protein family. These proteins are basic helix-loop-helix transcription factors which can act as tumor suppressors but lack DNA binding activity. Consequently, the activity of the encoded protein depends on the protein binding partner.

Recommended Dilution

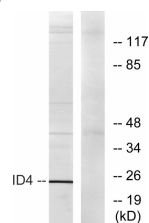
WB: 1: 500 - 1: 2000

IHC: 1: 100 - 1: 300

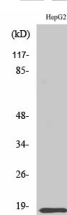
ELISA: 1: 20000

Not yet tested in other applications.

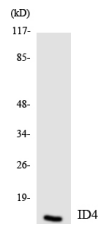
Images



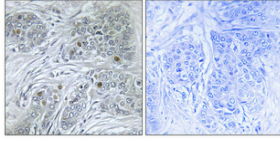
Western blot analysis of lysates from HepG2 cells, using ID4 Antibody. The lane on the right is blocked with the synthesized peptide.



Western Blot analysis of various cells using Id4 Polyclonal Antibody diluted at 1:500 cells nucleus.



Western blot analysis of the lysates from HeLa cells using ID4 antibody.



Immunohistochemical analysis of paraffin-embedded Human breast cancer. Antibody was diluted at 1:100(4° overnight). High-pressure and temperature Tris-EDTA,pH8.0 was used for antigen retrieval. Negative contrl (right) obtaned from antibody was pre-absorbed by immunogen peptide.

Storage

-20°C for one year

501 Changsheng S Rd, Nanhu Dist, Jiaxing, Zhejiang, China

Tel: 86 21 31007137 | E-mail: save@bt-laboratory.com | www.bt-laboratory.com