

## IFN- Alpha R2 Polyclonal Antibody

### Description

<b>Product type</b>	Primary Antibody
<b>Code</b>	BT-AP04372
<b>Host</b>	Rabbit
<b>Isotype</b>	IgG
<b>Size</b>	20ul, 50ul, 100ul
<b>Immunogen</b>	The antiserum was produced against synthesized peptide derived from the N-terminal region of human IFNAR2. AA range:41-90
<b>Mol wt</b>	57759
<b>Species reactivity</b>	Human
<b>Clonality</b>	Polyclonal
<b>Recommended application</b>	WB, IHC-p, ELISA
<b>Concentration</b>	1 mg/ml
<b>Full name</b>	IFN-alphaR2 Antibody
<b>Synonyms</b>	IFNAR2; IFNABR; IFNARB; Interferon alpha/beta receptor 2; IFN-R-2; IFN-alpha binding protein; IFN-alpha/beta receptor 2; Interferon alpha binding protein; Type I interferon receptor 2

This product is for research use only, not for use in human, therapeutic or diagnostic procedure.

### Background

Interferon alpha/beta receptor 2 encoded by IFNAR2 is a type I membrane protein that forms one of the two chains of a receptor for interferons alpha and beta. Binding and activation of the receptor stimulates Janus protein kinases, which in turn phosphorylate several proteins, including STAT1 and STAT2. Multiple transcript variants encoding at least two different isoforms have been found for this gene.

### Recommended Dilution

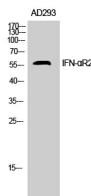
WB: 1: 500 - 1: 2000

IHC-p: 1: 100 - 1: 300

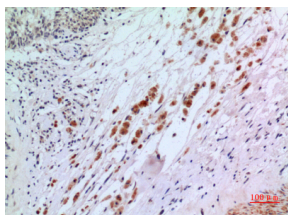
ELISA: 1: 20000

Not yet tested in other applications.

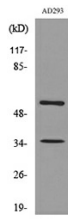
### Images



Western Blot analysis of AD293 cells using IFN- $\alpha$ R2 Polyclonal Antibody. Secondary antibody was diluted at 1:20000



Immunohistochemical analysis of paraffin-embedded human-brain, antibody was diluted at 1:100



Western blot analysis of lysate from AD293 cells, using IFNAR2 Antibody.

### Storage

-20°C for one year

501 Changsheng S Rd, Nanhu Dist, Jiaxing, Zhejiang, China

Tel: 86 21 31007137 | E-mail: [save@bt-laboratory.com](mailto:save@bt-laboratory.com) | [www.bt-laboratory.com](http://www.bt-laboratory.com)