

## IGF2-BP2 Polyclonal Antibody

### Description

<b>Product type</b>	Primary Antibody
<b>Code</b>	BT-AP04385
<b>Host</b>	Rabbit
<b>Isotype</b>	IgG
<b>Size</b>	20ul, 50ul, 100ul
<b>Immunogen</b>	The antiserum was produced against synthesized peptide derived from human IGF2BP2. AA range:141-190
<b>Mol wt</b>	61842
<b>Species reactivity</b>	Human
<b>Clonality</b>	Polyclonal
<b>Recommended application</b>	WB, ELISA
<b>Concentration</b>	1 mg/ml
<b>Full name</b>	IGF2-BP2 Antibody
<b>Synonyms</b>	IGF2BP2; IMP2; VICKZ2; Insulin-like growth factor 2 mRNA-binding protein 2; IGF2 mRNA-binding protein 2; IMP-2; Hepatocellular carcinoma autoantigen p62; IGF-II mRNA-binding protein 2; VICKZ family me

This product is for research use only, not for use in human, therapeutic or diagnostic procedure.

### Background

IGF2BP2 encodes a member of the IGF-II mRNA-binding protein (IMP) family. The insulin like growth factor 2 mRNA binding protein 2 encoded by this gene contains four KH domains and two RRM domains. It functions by binding to the 5' UTR of the insulin-like growth factor 2 (IGF2) mRNA and regulating IGF2 translation. Alternative promoter usage and alternate splicing result in multiple variants encoding different isoforms.

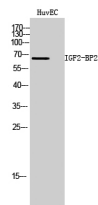
### Recommended Dilution

WB: 1: 500 - 1: 2000

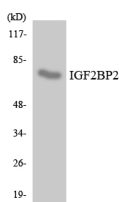
ELISA: 1: 20000

Not yet tested in other applications.

### Images



Western Blot analysis of HuvEC cells using IGF2-BP2 Polyclonal Antibody



Western blot analysis of the lysates from Jurkat cells using IGF2BP2 antibody.

## Storage

-20°C for one year

501 Changsheng S Rd, Nanhu Dist, Jiaxing, Zhejiang, China

Tel: 86 21 31007137 | E-mail: [save@bt-laboratory.com](mailto:save@bt-laboratory.com) | [www.bt-laboratory.com](http://www.bt-laboratory.com)