

IGFBP6 Polyclonal Antibody

Description

Product type	Primary Antibody
Code	BT-AP04390
Host	Rabbit
Isotype	IgG
Size	20ul, 50ul, 100ul
Immunogen	The antiserum was produced against synthesized peptide derived from the Internal region of human IGFBP6. AA range:101-150
Mol wt	25322
Species reactivity	Human
Clonality	Polyclonal
Recommended application	WB, ELISA
Concentration	1 mg/ml
Full name	IGFBP6 Antibody
Synonyms	IGFBP6; IBP6; Insulin-like growth factor-binding protein 6; IBP-6; IGF-binding protein 6; IGFBP-6

This product is for research use only, not for use in human, therapeutic or diagnostic procedure.

Background

IGF-binding proteins prolong the half-life of the IGFs and have been shown to either inhibit or stimulate the growth promoting effects of the IGFs on cell culture. They alter the interaction of IGFs with their cell surface receptors.

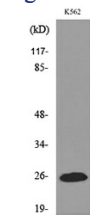
Recommended Dilution

WB: 1: 500 - 1: 2000

ELISA: 1: 20000

Not yet tested in other applications.

Images



Western blot analysis of lysate from K562 cells, using IGFBP6 Antibody.



Western Blot analysis of K562 cells using IGFBP6 Polyclonal Antibody. Secondary antibody was diluted at 1:20000

Storage

-20°C for one year

