

## IL-22 Polyclonal Antibody

### Description

<b>Product type</b>	Primary Antibody
<b>Code</b>	BT-AP04478
<b>Host</b>	Rabbit
<b>Isotype</b>	IgG
<b>Size</b>	20ul, 50ul, 100ul
<b>Immunogen</b>	The antiserum was produced against synthesized peptide derived from the C-terminal region of human IL22. AA range:121-170
<b>Mol wt</b>	20011
<b>Species reactivity</b>	Human, Mouse, Rat
<b>Clonality</b>	Polyclonal
<b>Recommended application</b>	WB, ELISA
<b>Concentration</b>	1 mg/ml
<b>Full name</b>	IL-22 Antibody
<b>Synonyms</b>	IL22; ILTIF; ZCYTO18; Interleukin-22; IL-22; Cytokine Zcyto18; IL-10-related T-cell-derived-inducible factor; IL-TIF

This product is for research use only, not for use in human, therapeutic or diagnostic procedure.

### Background

IL-10-related T cell-derived inducible factor (IL-22, also known as IL-TIF) is a cytokine that was originally identified in mouse as an IL-9 inducible gene in T cells and mast cells and shows 22% amino acid identity with IL-10. Additionally, IL-22 is induced by IL-9 in thymic lymphomas and by lectins in freshly isolated splenocytes. IL-22 is found in both the thymus and brain, which suggests that the role of this factor is not restricted to the immune system. IL-22 is a ligand for CRF2-4, a member of the class II cytokine receptor family. In contrast to IL-10, IL-22 does not inhibit the production of proinflammatory cytokines by monocytes in response to lipopolysaccharide nor does it impact IL-10 function on monocytes, but it has modest inhibitory effects on IL-4 production from Th2 T cells.

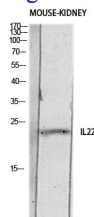
### Recommended Dilution

WB: 1: 500 - 1: 2000

ELISA: 1: 10000

Not yet tested in other applications.

### Images



Western blot analysis of MOUSE-KIDNEY lysis using IL22 antibody. Antibody was diluted at 1:500. Secondary antibody was diluted at 1:20000

### Storage

-20°C for one year