

E2F-6 Polyclonal Antibody

Description

Product type	Primary Antibody
Code	BT-AP04539
Host	Rabbit
Isotype	IgG
Size	20ul, 50ul, 100ul
Immunogen	The antiserum was produced against synthesized peptide derived from human E2F6. AA range:141-190
Mol wt	31844
Species reactivity	Human, Mouse, Rat
Clonality	Polyclonal
Recommended application	WB, IHC-p, ELISA
Concentration	1 mg/ml
Full name	E2F-6 Antibody
Synonyms	E2F6; Transcription factor E2F6; E2F-6

This product is for research use only, not for use in human, therapeutic or diagnostic procedure.

Background

E2F6 encodes a member of a family of transcription factors that play a crucial role in the control of the cell cycle. E2F transcription factor 6 encoded by E2F6 lacks the transactivation and tumor suppressor protein association domains found in other family members, and contains a modular suppression domain that functions in the inhibition of transcription. It interacts in a complex with chromatin modifying factors. There are pseudogenes for this gene on chromosomes 22 and X. Alternative splicing results in multiple transcript variants.

Recommended Dilution

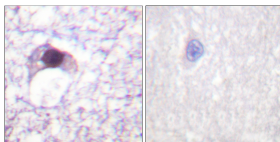
WB: 1: 500 - 1: 2000

IHC: 1: 100 - 1: 300

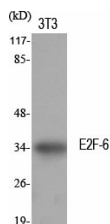
ELISA: 1: 20000

Not yet tested in other applications.

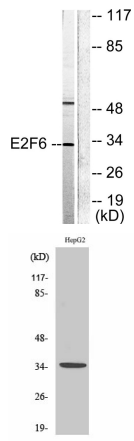
Images



Immunohistochemistry analysis of paraffin-embedded human brain tissue, using E2F6 Antibody. The picture on the right is blocked with the synthesized peptide.



Western Blot analysis of various cells using E2F-6 Polyclonal Antibody diluted at 1:500 cells nucleus.



Western blot analysis of lysates from HepG2 cells, using E2F6 Antibody. The lane on the right is blocked with the synthesized peptide.

Western Blot analysis of HepG2 cells using E2F-6 Polyclonal Antibody diluted at 1:500 cells nucleus.

Storage

-20°C for one year

501 Changsheng S Rd, Nanhu Dist, Jiaxing, Zhejiang, China

Tel: 86 21 31007137 | E-mail: save@bt-laboratory.com | www.bt-laboratory.com