

## Insulin R Polyclonal Antibody

### Description

Product type	Primary Antibody
Code	BT-AP04566
Host	Rabbit
Isotype	IgG
Size	20ul, 50ul, 100ul
Immunogen	Synthetic peptide from human protein at AA range: 811-860
Mol wt	156307
Species reactivity	Human
Clonality	Polyclonal
Recommended application	IHC-p, ELISA
Concentration	1 mg/ml
Full name	Insulin R Antibody
Synonyms	Insulin receptor (IR) (EC 2.7.10.1) (CD antigen CD220) [Cleaved into: Insulin receptor subunit alpha; Insulin receptor subunit beta]

This product is for research use only, not for use in human, therapeutic or diagnostic procedure.

### Background

INSR encodes a member of the receptor tyrosine kinase family of proteins. The encoded preproprotein is proteolytically processed to generate alpha and beta subunits that form a heterotetrameric receptor. Binding of insulin or other ligands to this receptor activates the insulin signaling pathway, which regulates glucose uptake and release, as well as the synthesis and storage of carbohydrates, lipids and protein. Mutations in this gene underlie the inherited severe insulin resistance syndromes including type A insulin resistance syndrome, Donohue syndrome and Rabson-Mendenhall syndrome. Alternative splicing results in multiple transcript variants.

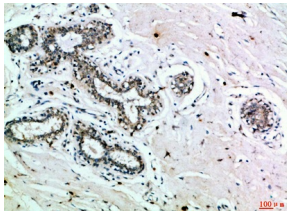
### Recommended Dilution

IHC-p: 1: 50 - 200

ELISA: 1: 10000 - 20000

Not yet tested in other applications.

### Images



Immunohistochemical analysis of paraffin-embedded Human-breast, antibody was diluted at 1:100

### Storage

-20°C for one year