

INTS2 Polyclonal Antibody

Description

Product type	Primary Antibody
Code	BT-AP04596
Host	Rabbit
Isotype	IgG
Size	20ul, 50ul, 100ul
Immunogen	The antiserum was produced against synthesized peptide derived from human INTS2. AA range:201-250
Mol wt	134346
Species reactivity	Human, Mouse, Rat
Clonality	Polyclonal
Recommended application	WB, ELISA
Concentration	1 mg/ml
Full name	INTS2 Antibody
Synonyms	INTS2; KIAA1287; Integrator complex subunit 2; Int2

This product is for research use only, not for use in human, therapeutic or diagnostic procedure.

Background

INTS2 (integrator complex subunit 2) is a subunit of the Integrator complex, which associates with the C-terminal domain of RNA polymerase II large subunit (POLR2A; MIM 180660) and mediates 3-prime end processing of small nuclear RNAs U1 (RNU1; MIM 180680) and U2 (RNU2; MIM 180690).

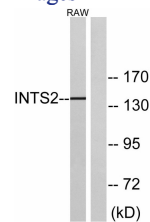
Recommended Dilution

WB: 1: 500 - 1: 2000

ELISA: 1: 20000

Not yet tested in other applications.

Images



Western blot analysis of lysates from RAW264.7 cells, using INTS2 Antibody. The lane on the right is blocked with the synthesized peptide.

Storage

-20°C for one year