

S26A7 Rabbit Polyclonal Antibody

Description

Product type	Primary Antibody
Code	BT-AP04598
Host	Rabbit
Isotype	IgG
Size	20ul, 50ul, 100ul
Immunogen	Synthesized peptide derived from human S26A7
Mol wt	72160
Species reactivity	Human, Mouse
Clonality	Polyclonal
Recommended application	WB
Concentration	1 mg/ml
Full name	S26A7
Synonyms	S26A7

This product is for research use only, not for use in human, therapeutic or diagnostic procedure.

Background

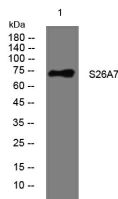
This gene is one member of a family of sulfate/anion transporter genes. Family members are well conserved in gene structure and protein length yet have markedly different tissue expression patterns. This gene has abundant and specific expression in the kidney. Alternatively spliced transcript variants that encode different isoforms have been described.

Recommended Dilution

WB: 1: 500 - 1: 2000

Not yet tested in other applications.

Images



Western blot analysis of lysates from HpeG2 cells, primary antibody was diluted at 1:1000, 4°C overnight

Storage

-20°C for 1 year

501 Changsheng S Rd, Nanhu Dist, Jiaxing, Zhejiang, China

Tel: 86 21 31007137 | E-mail: save@bt-laboratory.com | www.bt-laboratory.com