

## KEPI Polyclonal Antibody

### Description

<b>Product type</b>	Primary Antibody
<b>Code</b>	BT-AP04787
<b>Host</b>	Rabbit
<b>Isotype</b>	IgG
<b>Size</b>	20ul, 50ul, 100ul
<b>Immunogen</b>	The antiserum was produced against synthesized peptide derived from human PPP1R14C. AA range:51-100
<b>Mol wt</b>	17843
<b>Species reactivity</b>	Human, Mouse, Rat
<b>Clonality</b>	Polyclonal
<b>Recommended application</b>	WB, IHC-p, IF, ELISA
<b>Concentration</b>	1 mg/ml
<b>Full name</b>	KEPI Antibody
<b>Synonyms</b>	PPP1R14C; KEPI; Protein phosphatase 1 regulatory subunit 14C; Kinase-enhanced PP1 inhibitor; PKC-potentiated PP1 inhibitory protein; Serologically defined breast cancer antigen NY-BR-81

**This product is for research use only, not for use in human, therapeutic or diagnostic procedure.**

### Background

The degree of protein phosphorylation is regulated by a balance of protein kinase and phosphatase activities. Protein phosphatase 1 regulatory subunit 14C is a signal-transducing phosphatase that influences neuronal activity, protein synthesis, metabolism, muscle contraction, and cell division. PPP1R14C is an inhibitor of PP1

### Recommended Dilution

WB: 1: 500 - 1: 2000

IHC: 1: 100 - 1: 300

IF: 1: 200 - 1: 1000

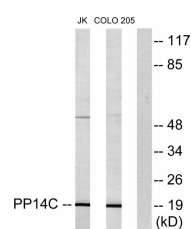
ELISA: 1: 20000

Not yet tested in other applications.

### Images



Western Blot analysis of various cells using KEPI Polyclonal Antibody diluted at 1:1000



Western blot analysis of lysates from Jurkat and COLO205 cells, using PPP1R14C Antibody. The lane on the right is blocked with the synthesized peptide.

## Storage

-20°C for one year

501 Changsheng S Rd, Nanhu Dist, Jiaxing, Zhejiang, China

Tel: 86 21 31007137 | E-mail: [save@bt-laboratory.com](mailto:save@bt-laboratory.com) | [www.bt-laboratory.com](http://www.bt-laboratory.com)