

SNG4 Rabbit Polyclonal Antibody

Description

Product type	Primary Antibody
Code	BT-AP04802
Host	Rabbit
Isotype	IgG
Size	20ul, 50ul, 100ul
Immunogen	Synthesized peptide derived from human SNG4
Mol wt	25740
Species reactivity	Human, Mouse
Clonality	Polyclonal
Recommended application	WB
Concentration	1 mg/ml
Full name	SNG4
Synonyms	SNG4

This product is for research use only, not for use in human, therapeutic or diagnostic procedure.

Background

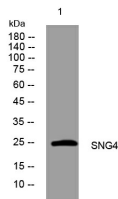
This gene encodes an integral membrane protein. The gene belongs to the synaptogyrin gene family. Like other members of the family the protein contains four transmembrane regions. The exact function of this protein is unclear.

Recommended Dilution

WB: 1: 500 - 1: 2000

Not yet tested in other applications.

Images



Storage

-20°C for 1 year

501 Changsheng S Rd, Nanhu Dist, Jiaxing, Zhejiang, China

Tel: 86 21 31007137 | E-mail: save@bt-laboratory.com | www.bt-laboratory.com