

KLHL29 Polyclonal Antibody

Description

Product type	Primary Antibody
Code	BT-AP04844
Host	Rabbit
Isotype	IgG
Size	20ul, 50ul, 100ul
Immunogen	The antiserum was produced against synthesized peptide derived from human KLHL29. AA range:261-310
Mol wt	71468
Species reactivity	Human, Mouse
Clonality	Polyclonal
Recommended application	IHC-p, ELISA
Concentration	1 mg/ml
Full name	KLHL29 Antibody
Synonyms	KLHL29; KBTBD9; KIAA1921; Kelch-like protein 29; Kelch repeat and BTB domain-containing protein 9

This product is for research use only, not for use in human, therapeutic or diagnostic procedure.

Background

KLHL29 (Kelch Like Family Member 29) is a Protein Coding gene. An important paralog of this gene is KBTBD4.

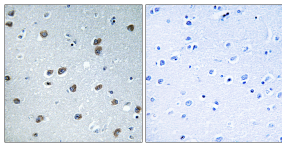
Recommended Dilution

IHC: 1: 100 - 1: 300

ELISA: 1: 40000

Not yet tested in other applications.

Images



Immunohistochemistry analysis of paraffin-embedded human brain tissue, using KLHL29 Antibody. The picture on the right is blocked with the synthesized peptide.

Storage

-20°C for one year

501 Changsheng S Rd, Nanhu Dist, Jiaxing, Zhejiang, China

Tel: 86 21 31007137 | E-mail: save@bt-laboratory.com | www.bt-laboratory.com