

LDLRAD2 Polyclonal Antibody

Description

Product type	Primary Antibody
Code	BT-AP04988
Host	Rabbit
Isotype	IgG
Size	20ul, 50ul, 100ul
Immunogen	The antiserum was produced against synthesized peptide derived from human LDLRAD2. AA range:130-179
Mol wt	28581
Species reactivity	Human
Clonality	Polyclonal
Recommended application	WB, ELISA
Concentration	1 mg/ml
Full name	LDLRAD2 Antibody
Synonyms	LDLRAD2; Low-density lipoprotein receptor class A domain-containing protein 2

This product is for research use only, not for use in human, therapeutic or diagnostic procedure.

Background

LDLRAD2 is a gene on chromosome 1p36. 2. Low-density lipoprotein receptor class A domain-containing protein 2 encoded by LDLRAD2 is a low-density lipoprotein receptor.

Recommended Dilution

WB: 1: 500 - 1: 2000

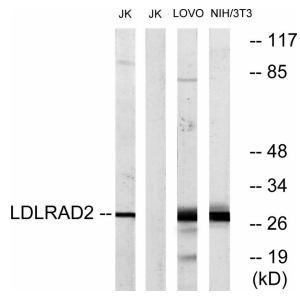
ELISA: 1: 20000

Not yet tested in other applications.

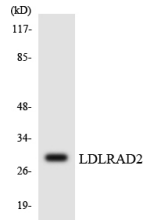
Images



Western Blot analysis of various cells using LDLRAD2 Polyclonal Antibody diluted at 1:500



Western blot analysis of lysates from Jurkat, LOVO, and NIH/3T3 cells, using LDLRAD2 Antibody.
The lane on the right is blocked with the synthesized peptide.



Western blot analysis of the lysates from HepG2 cells using LDLRAD2 antibody.

Storage

-20°C for one year

501 Changsheng S Rd, Nanhu Dist, Jiaxing, Zhejiang, China

Tel: 86 21 31007137 | E-mail: save@bt-laboratory.com | www.bt-laboratory.com