

LUCA15 Polyclonal Antibody

Description

Product type	Primary Antibody
Code	BT-AP05113
Host	Rabbit
Isotype	IgG
Size	20ul, 50ul, 100ul
Immunogen	The antiserum was produced against synthesized peptide derived from human RBM5. AA range:226-275
Mol wt	92154
Species reactivity	Human, Mouse
Clonality	Polyclonal
Recommended application	WB, IHC-p, ELISA
Concentration	1 mg/ml
Full name	LUCA15 Antibody
Synonyms	RBM5; H37; LUCA15; RNA-binding protein 5; Protein G15; Putative tumor suppressor LUCA15; RNA-binding motif protein 5; Renal carcinoma antigen NY-REN-9

This product is for research use only, not for use in human, therapeutic or diagnostic procedure.

Background

RBM5 is a candidate tumor suppressor gene which encodes a nuclear RNA binding protein that is a component of the spliceosome A complex. RNA-binding protein 5 plays a role in the induction of cell cycle arrest and apoptosis through pre-mRNA splicing of multiple target genes including the tumor suppressor protein p53. RBM5 is located within the tumor suppressor region 3p21. , and may play a role in the inhibition of tumor transformation and progression of several malignancies including lung cancer.

Recommended Dilution

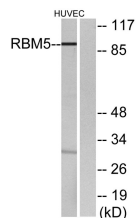
WB: 1: 500 - 1: 2000

IHC: 1: 100 - 1: 300

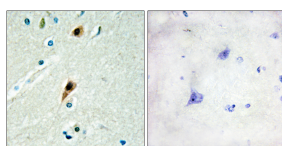
ELISA: 1: 10000

Not yet tested in other applications.

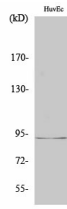
Images



Western blot analysis of lysates from HUVEC cells, using RBM5 Antibody. The lane on the right is blocked with the synthesized peptide.



Immunohistochemistry analysis of paraffin-embedded human brain tissue, using RBM5 Antibody. The picture on the right is blocked with the synthesized peptide.



Western Blot analysis of various cells using LUCA15 Polyclonal Antibody cells nucleus.

Storage

-20°C for one year

501 Changsheng S Rd, Nanhu Dist, Jiaxing, Zhejiang, China

Tel: 86 21 31007137 | E-mail: save@bt-laboratory.com | www.bt-laboratory.com