

MCM6 Polyclonal Antibody

Description

| | |
|--------------------------------|---|
| Product type | Primary Antibody |
| Code | BT-AP05278 |
| Host | Rabbit |
| Isotype | IgG |
| Size | 20ul, 50ul, 100ul |
| Immunogen | The antiserum was produced against synthesized peptide derived from the Internal region of human MCM6. AA range:331-380 |
| Mol wt | 90310 |
| Species reactivity | Human, Mouse, Rat |
| Clonality | Polyclonal |
| Recommended application | WB, ELISA |
| Concentration | 1 mg/ml |
| Full name | MCM6 Antibody |
| Synonyms | MCM6; DNA replication licensing factor MCM6; p105MCM |

This product is for research use only, not for use in human, therapeutic or diagnostic procedure.

Background

DNA replication licensing factor MCM6 encoded by MCM6 is one of the highly conserved mini-chromosome maintenance proteins (MCM) that are essential for the initiation of eukaryotic genome replication. The hexameric protein complex formed by the MCM proteins is a key component of the pre-replication complex (pre_RC) and may be involved in the formation of replication forks and in the recruitment of other DNA replication related proteins. The MCM complex consisting of this protein and MCM2, 4 and 7 proteins possesses DNA helicase activity, and may act as a DNA unwinding enzyme. The phosphorylation of the complex by CDC2 kinase reduces the helicase activity, suggesting a role in the regulation of DNA replication. Single nucleotide polymorphisms in the intron regions of this gene are associated with differential transcriptional activation of the promoter of the neighboring lactase gene and, thereby, influence lactose intolerance in early adulthood.

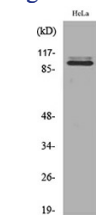
Recommended Dilution

WB: 1: 500 - 1: 2000

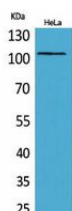
ELISA: 1: 20000

Not yet tested in other applications.

Images



Western blot analysis of lysate from HeLa cells, using MCM6 Antibody.



Western Blot analysis of HeLa cells using MCM6 Polyclonal Antibody . Secondary antibody was diluted at 1:20000 cells nucleus.

Storage

-20°C for one year

501 Changsheng S Rd, Nanhu Dist, Jiaxing, Zhejiang, China

Tel: 86 21 31007137 | E-mail: save@bt-laboratory.com | www.bt-laboratory.com