

MEF-2B Polyclonal Antibody

Description

Product type	Primary Antibody
Code	BT-AP05325
Host	Rabbit
Isotype	IgG
Size	20ul, 50ul, 100ul
Immunogen	The antiserum was produced against synthesized peptide derived from human MEF2B. AA range:51-100
Mol wt	38639
Species reactivity	Human, Mouse
Clonality	Polyclonal
Recommended application	WB, IHC-p, ELISA
Concentration	1 mg/ml
Full name	MEF-2B Antibody
Synonyms	MEF2B; XMEF2; Myocyte-specific enhancer factor 2B; RSRFR2; Serum response factor-like protein 2

This product is for research use only, not for use in human, therapeutic or diagnostic procedure.

Background

MEF2B represents numerous read-through transcripts that span GeneID: 729991 and 100271849. Many read-through transcripts are predicted to be nonsense-mediated decay (NMD) candidates, and are thought to be non-coding. Some transcripts are predicted to be capable of translation reinitiation at a downstream AUG, resulting in expression of at least one isoform of myocyte-specific enhancer factor 2B (MEF2B) from this read-through locus. At least one additional MEF2B variant and isoform can be expressed from a downstream promoter, and is annotated on GeneID: 100271849.

Recommended Dilution

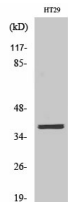
WB: 1: 500 - 1: 2000

IHC: 1: 100 - 1: 300

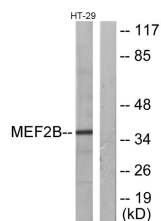
ELISA: 1: 10000

Not yet tested in other applications.

Images



Western Blot analysis of various cells using MEF-2B Polyclonal Antibody cells nucleus.



Western blot analysis of lysates from HT-29 cells, using MEF2B Antibody. The lane on the right is blocked with the synthesized peptide.

Storage

-20°C for one year

501 Changsheng S Rd, Nanhu Dist, Jiaxing, Zhejiang, China

Tel: 86 21 31007137 | E-mail: save@bt-laboratory.com | www.bt-laboratory.com